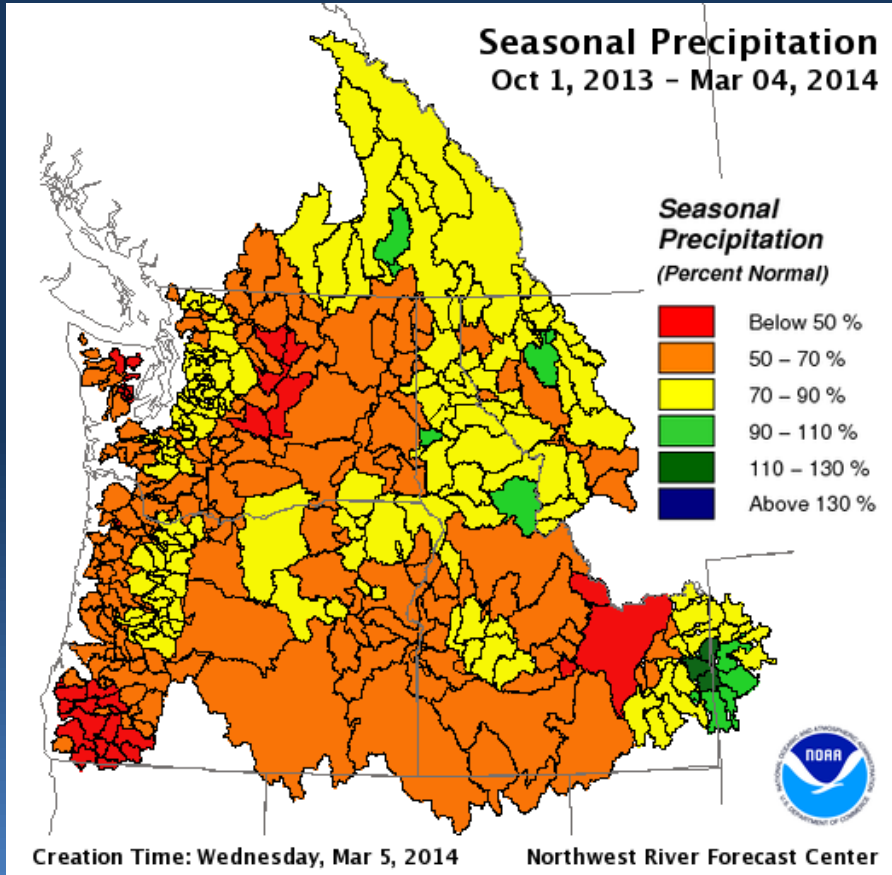




Observed Seasonal Precipitation



Observed Precipitation Water Year to Date Columbia River Above the Dalles

DIVISION NAME	OBS (in)	% Norm
Snake River abv Ice Harbor Dam	8.6	73
Columbia River abv Grand Coulee	15.5	78
Columbia River abv The Dalles	11.0	73

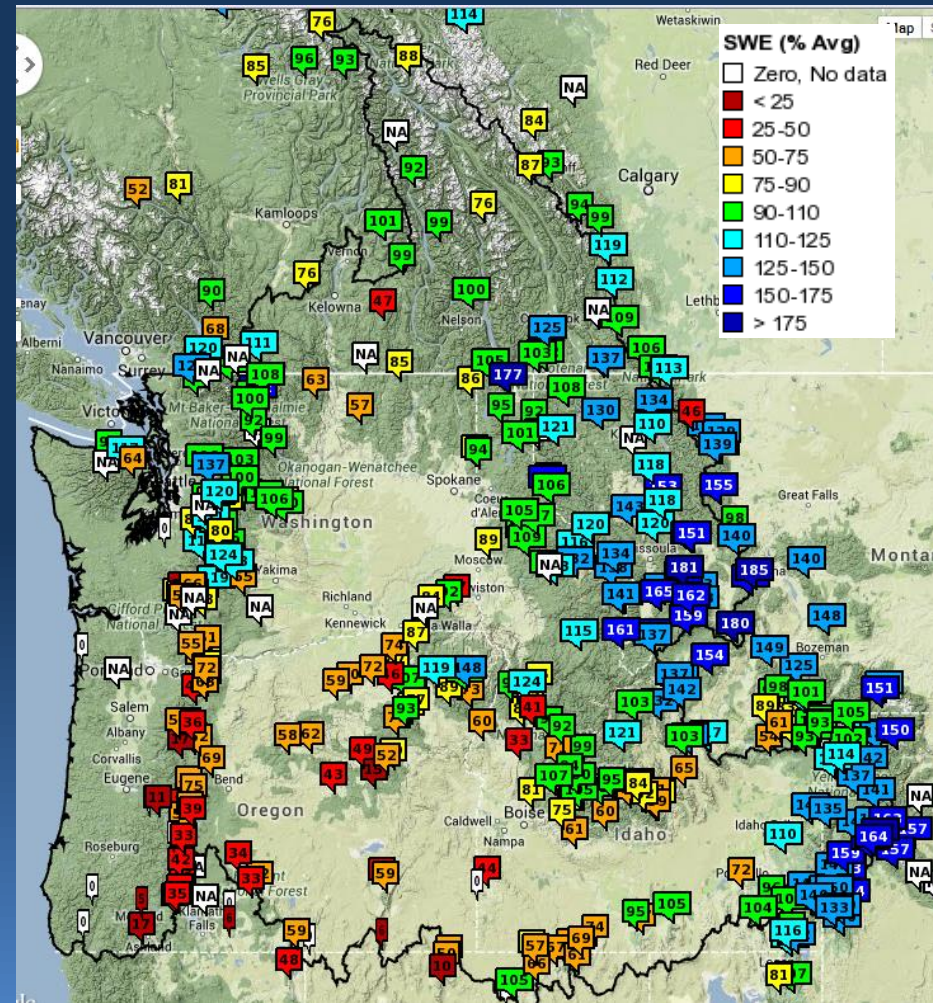
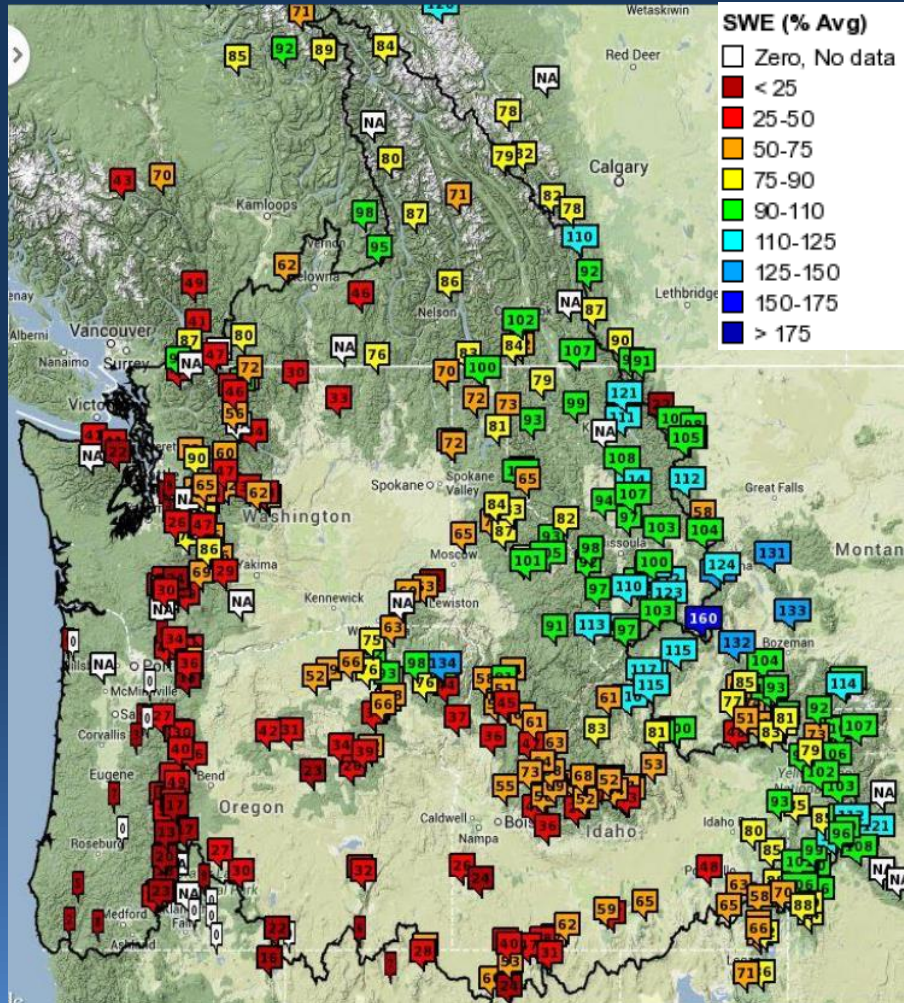


Snow Conditions



Last Month: Feb 3, 2014

Current: Mar 5, 2014



<http://www.nwrfc.noaa.gov/snow/index.html?version=20131029v2>



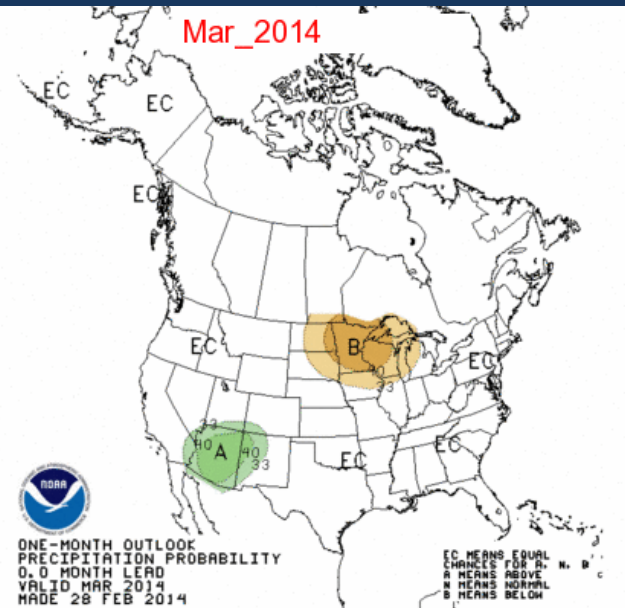
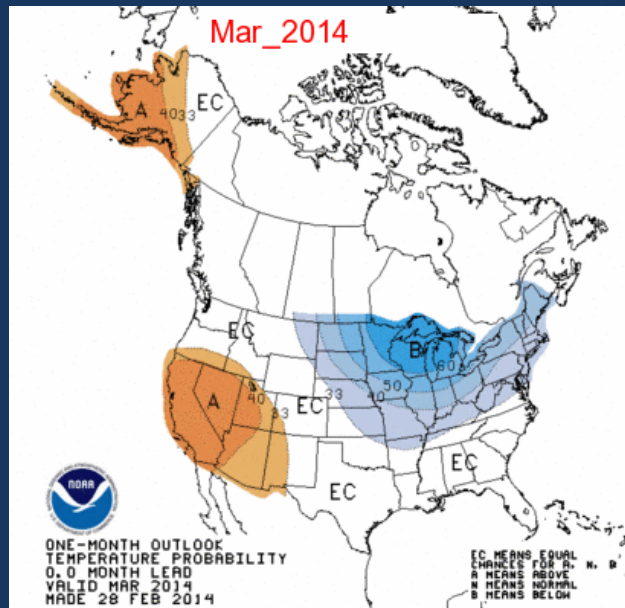
CPC Climate Outlook



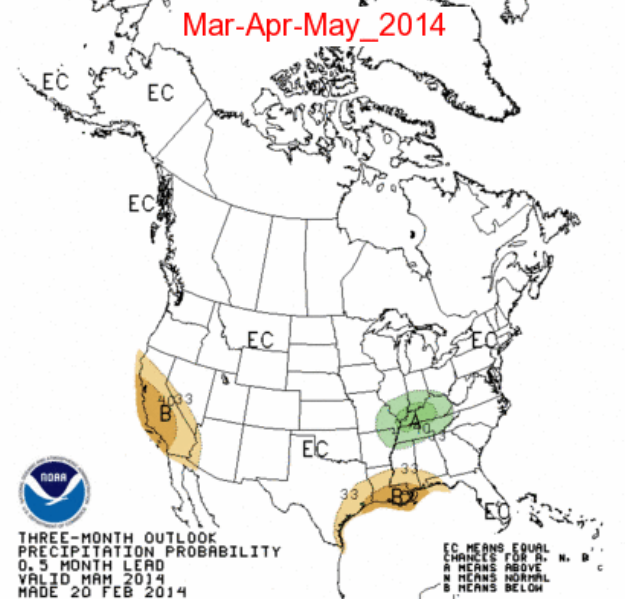
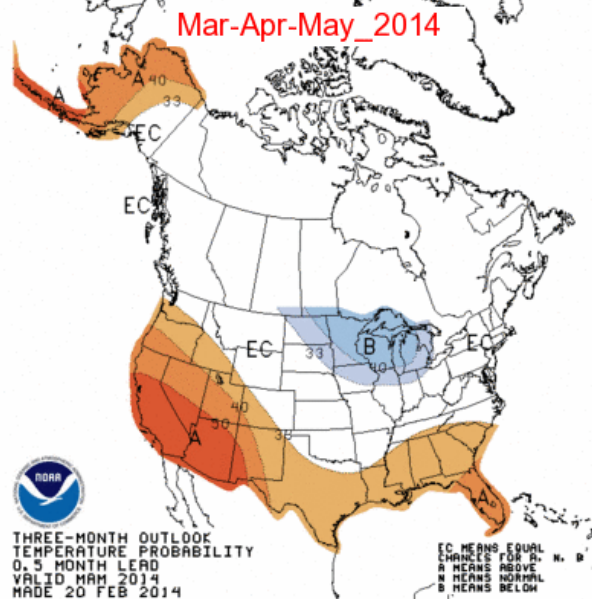
Temperature

Precipitation

Current Month Outlook



Three Month Outlook

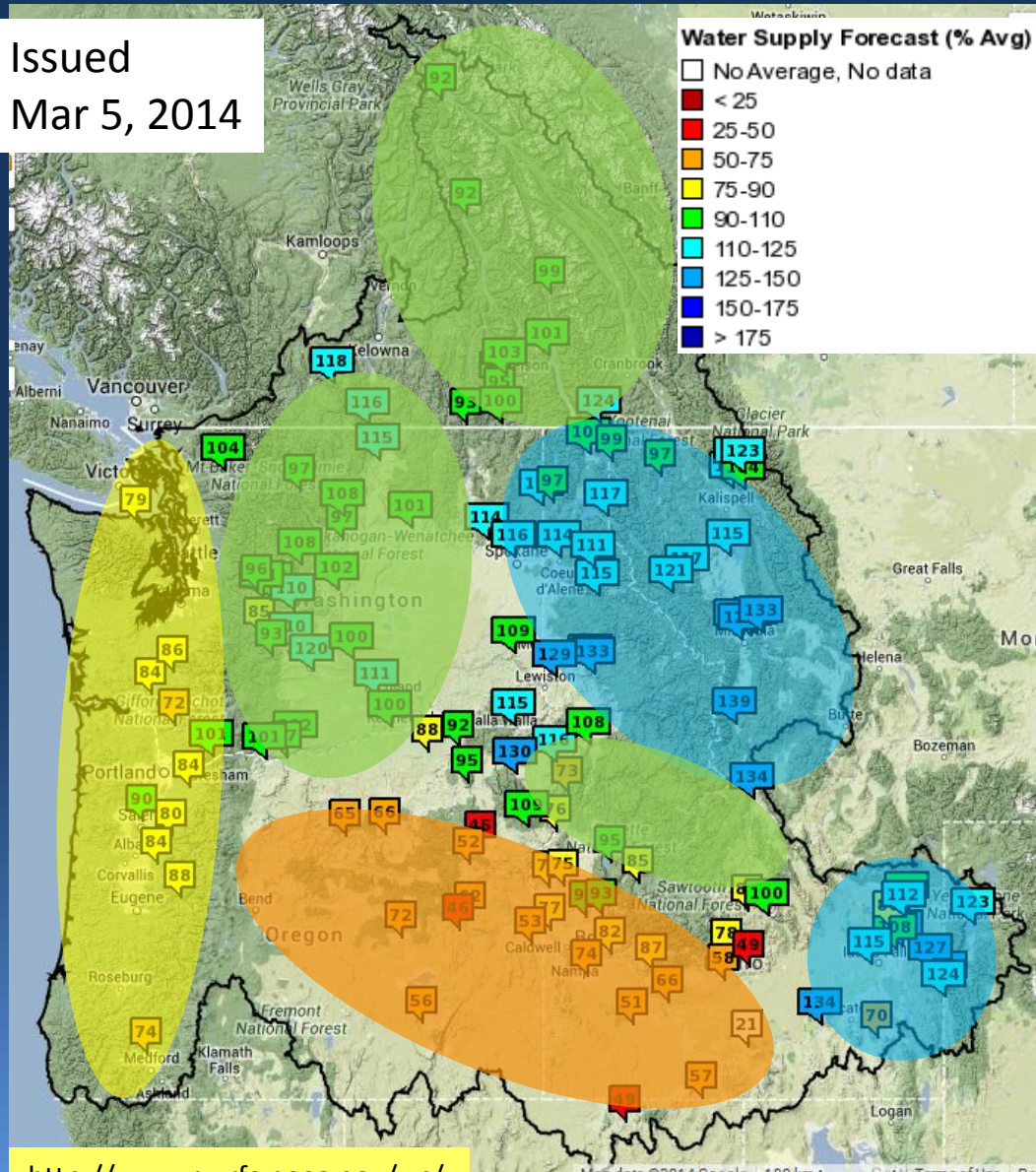




Water Supply Summary



Issued
Mar 5, 2014



Most forecasts have increased due to well above normal precipitation in February.

Apr-Sep forecasts for most basins are normal to above normal. Forecasts for basins west of the Cascades, southeast Oregon, and southwest Idaho are below normal.

Wettest forecasts (above 110%) are in basins draining the Bitterroot Range and the Rockies.

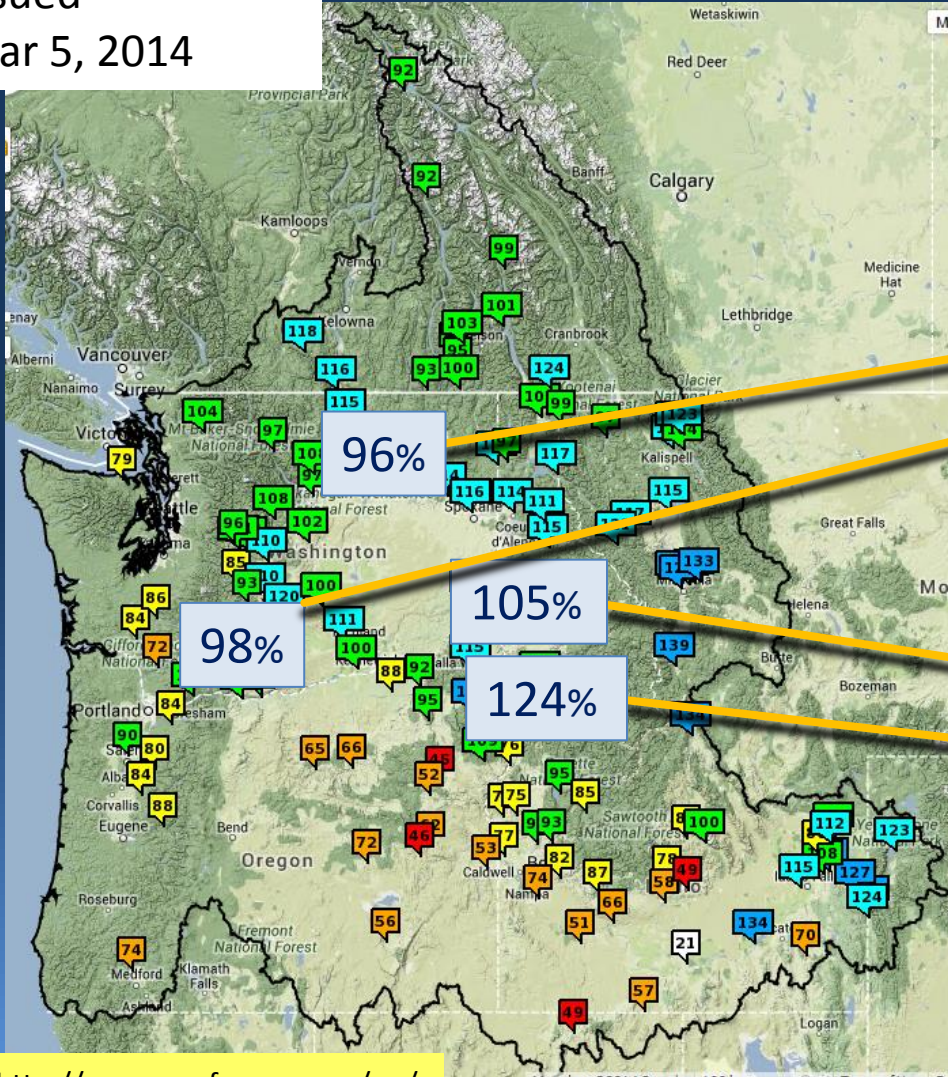


Water Supply Forecasts



Issued
Mar 5, 2014

Apr-Sep



Feb/Mar % Change

Columbia (Jan-Jul)

– Grand Coulee Dam

+12

Rank: 37/54

– The Dalles Dam

+16

Rank: 30/54

Snake (Jan-Jul)

– Lower Granite Dam

+17

Rank: 24/54

– Clearwater at Spalding

+19

Rank: 11/54

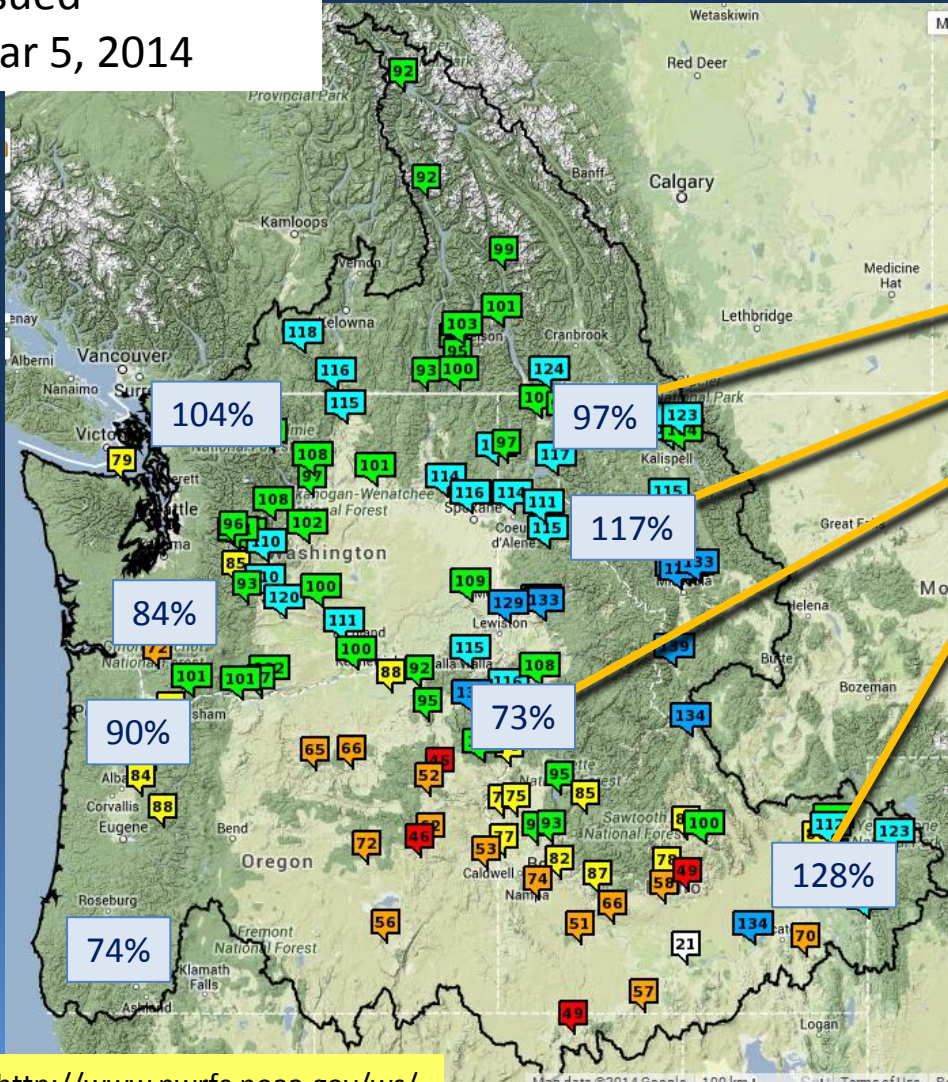


Water Supply Forecasts



Apr-Sep

Issued
Mar 5, 2014



Feb/Mar % Change

East-Side (Apr-Sep)

- Kootenai at Libby Dam **+9** Rank: 33/54
- Clark Fork nr Plains **+23** Rank: 17/44
- Snake at Hells Canyon **+7** Rank: 29/44
- Snake nr Heise **+37** Rank: 29/44

West-Side (Apr-Sep)

- Skagit nr Concrete **+21** Rank: 19/44
(104%)
- Cowlitz at Castle Rock **+6** Rank: 33/44
(84%)
- Willamette at Salem **+4** Rank: 33/44
(90%)
- Rogue at Raygold **+10** Rank: 36/44
(74%)



Northwest River Forecast Center

Water Supply Forecasts

[Close](#)
[Archive](#)
[Data/Normals](#)
[Rankings](#)
[Adjustments](#)
[Verification](#)
[Verify All Years](#)
[Help](#)

COLUMBIA - THE DALLES DAM (TDAO3)

Forecasts for Water Year 2014

Official Forecast

10 days QPF: Ensemble: 2014-03-04 Issued: 2014-03-05

Forecast Period	Forecasts Are in KAF				30 Year Average (1981-2010)
	90 %	50 %	% Average	10 %	
APR-SEP	85349	93323	101	104412	92704
APR-JUL	72427	79985	100	90478	79855
APR-AUG	79919	87453	100	98348	87532
JAN-JUL	91844	99615	98	110960	101368

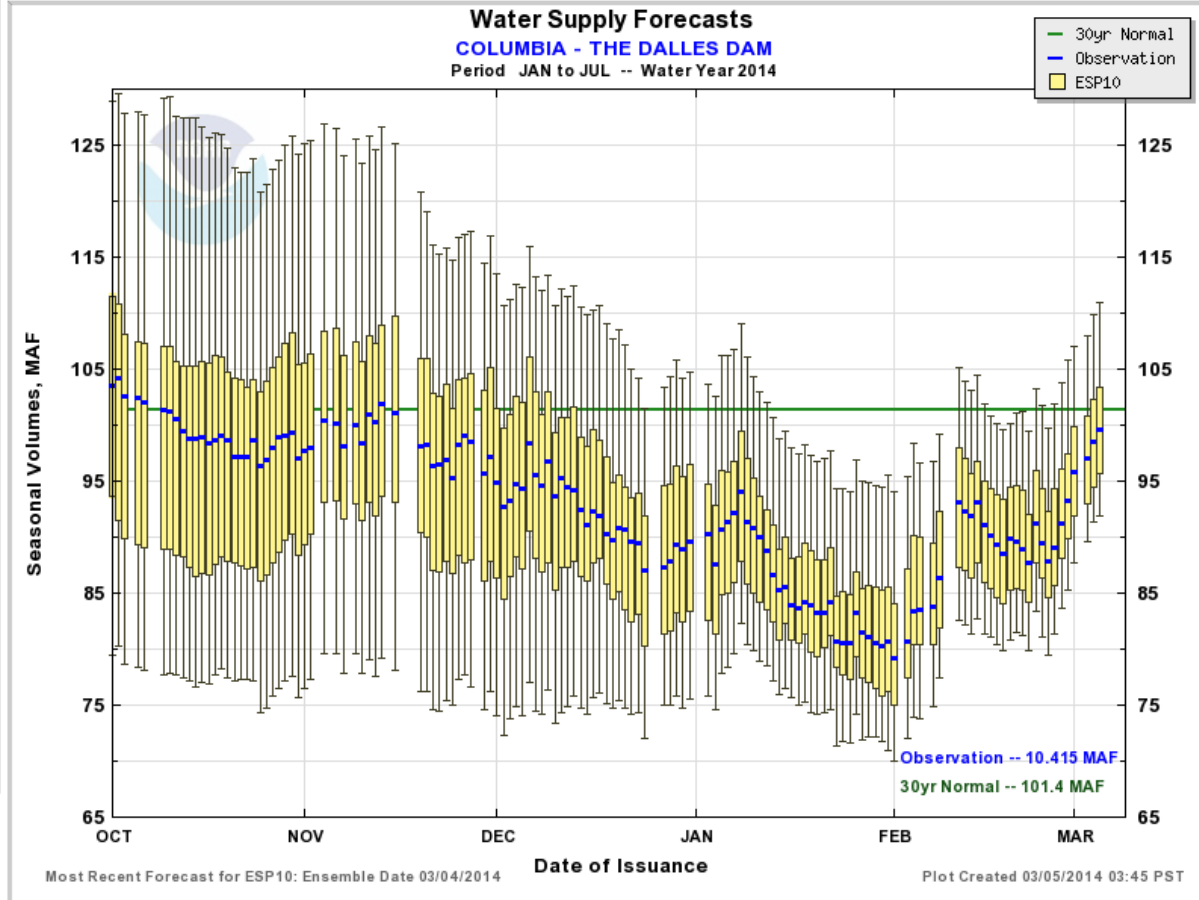
5 days QPF: Ensemble: 2014-03-04 Issued: 2014-03-05

APR-SEP	83931	93071	100	103573	92704
APR-JUL	70630	78742	99	89599	79855
APR-AUG	78758	86462	99	97391	87532
JAN-JUL	89393	97736	96	109785	101368

0 days QPF: Ensemble: 2014-03-04 Issued: 2014-03-05

APR-SEP	80402	88844	96	100030	92704
APR-JUL	68190	75684	95	87138	79855
APR-AUG	75105	83046	95	94680	87532
JAN-JUL	84770	92871	92	105015	101368

Move the mouse over the desired "Forecast Period" to display a graph.



Max Scale
 Scale To Data
 Scale To Last 45 Days

Note: Compatible with the latest browsers (Chrome, Firefox, Safari, and Internet Explorer (ie9+)).

Overlay

ESP10
 ESP5
 ESPO

Data Files

[CSV \(ESP10 / JAN-JUL\)](#)



NWRFC Water Supply Webpage

http://www.nwrfc.noaa.gov/water_supply/ws_schd.cgi



2014 Schedule for <i>Live Water Supply Briefings</i>					
Jan	Feb	Mar	Apr	May	Jun
9	6	6	10	8	TBD
<i>All presentations held at 10am PDT/PST, unless noted otherwise</i>					
Click here for Registration Information					
Archive of Previous Briefings					

<http://www.nwrfc.noaa.gov/presentations/presentations.cgi>

Brad Gillies, NWRFC
W-ptr.Webmaster@noaa.gov
(503)326-7291