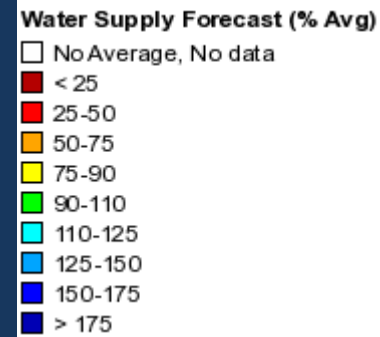
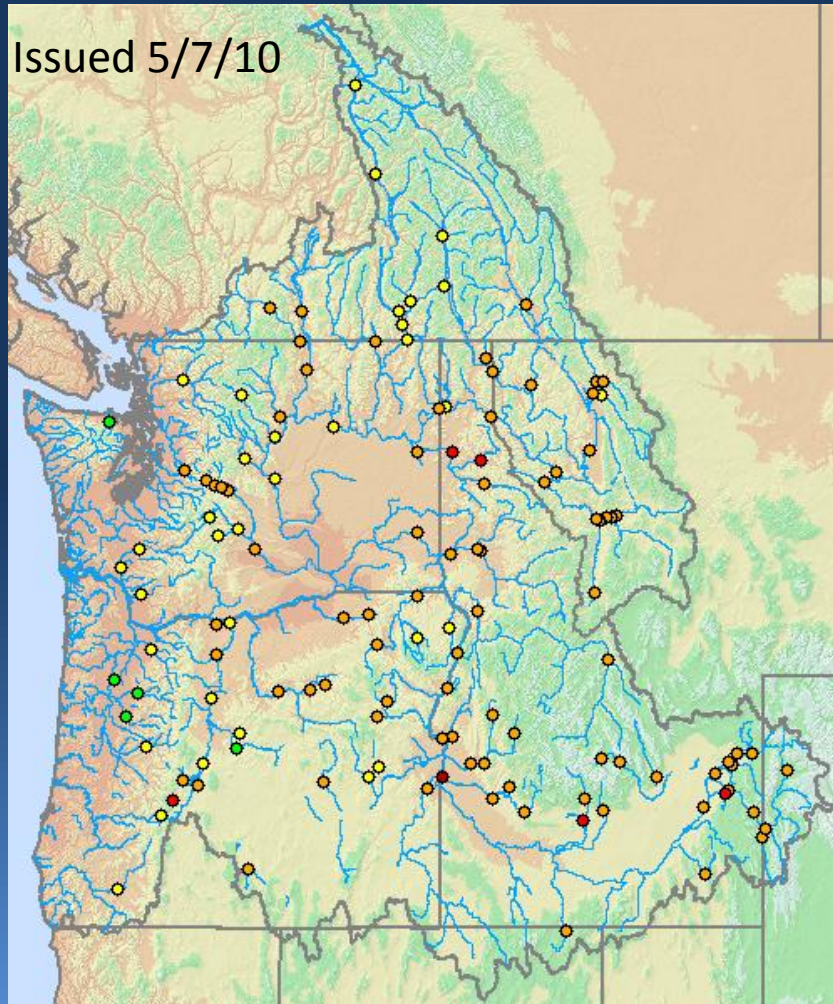




Northwest River Forecast Center Water Supply Briefing



May 7th "Final" Forecast

Legacy Regression Model

Agency Coordinated

100% of Normal
Precipitation Forecast

NWRFC Forecast for Canada



Observed Conditions



Precipitation

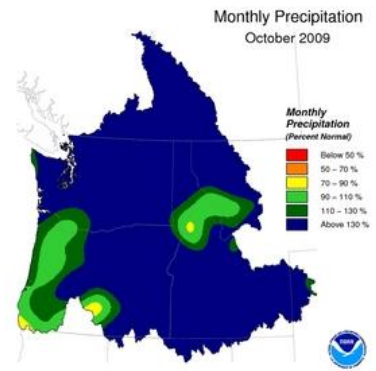
Snowpack

Runoff



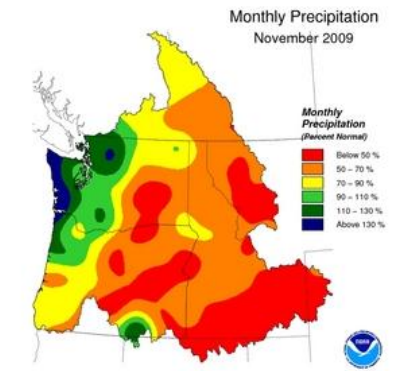
Monthly Precipitation Plots for Water Year 2010

Click on Image to Display Larger Plot



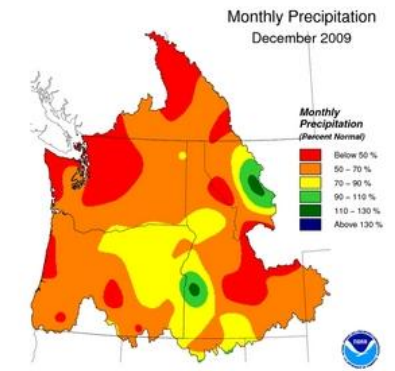
Creation Time: Sun, Mar 7, 2010

Northwest River Forecast Center



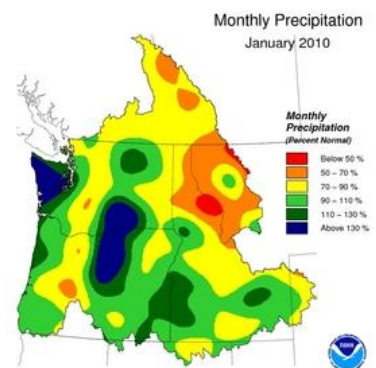
Creation Time: Sun, Mar 7, 2010

Northwest River Forecast Center



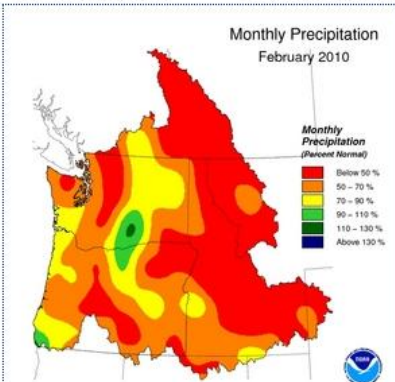
Creation Time: Sun, Mar 7, 2010

Northwest River Forecast Center



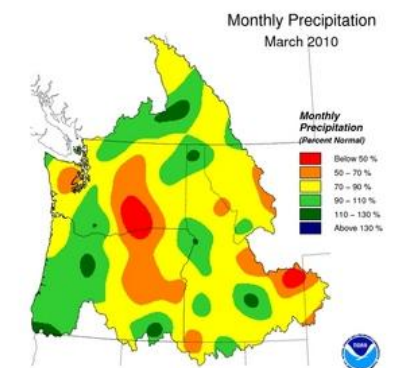
Creation Time: Mon, Mar 8, 2010

Northwest River Forecast Center



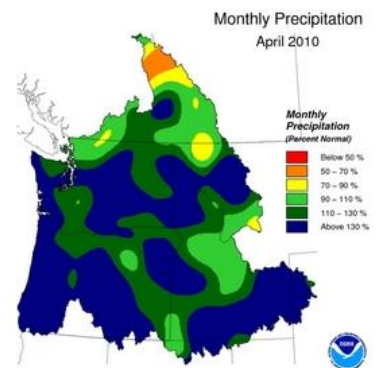
Creation Time: Fri, Mar 19, 2010

Northwest River Forecast Center



Creation Time: Wed, Apr 7, 2010

Northwest River Forecast Center



Creation Time: Fri, May 7, 2010

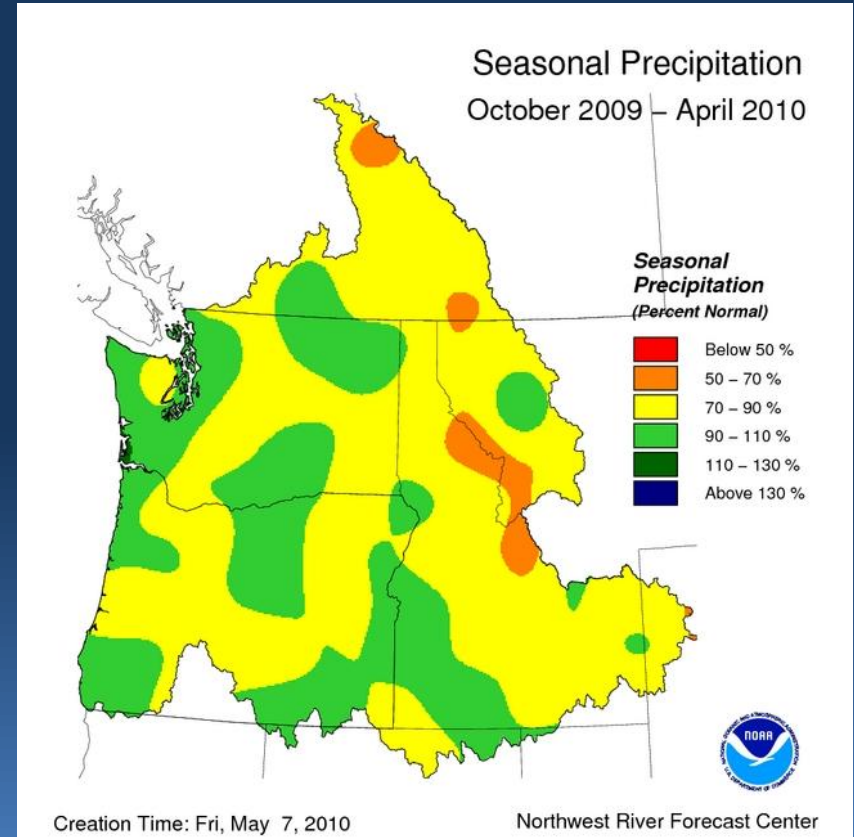
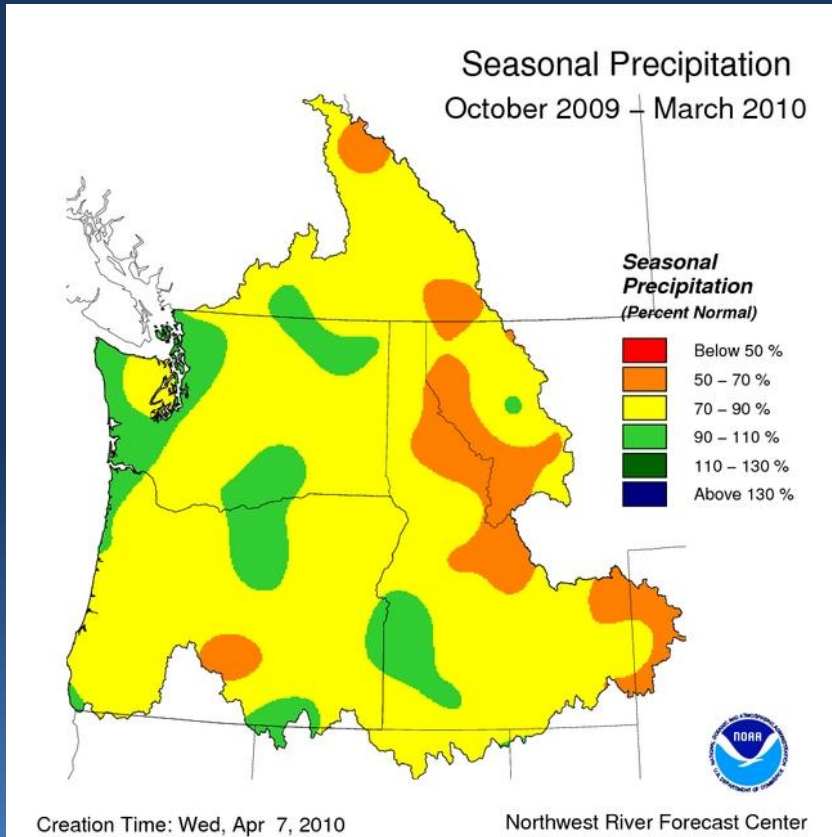
Northwest River Forecast Center

May 2010 missing

June 2010 missing



Observed Seasonal Precipitation



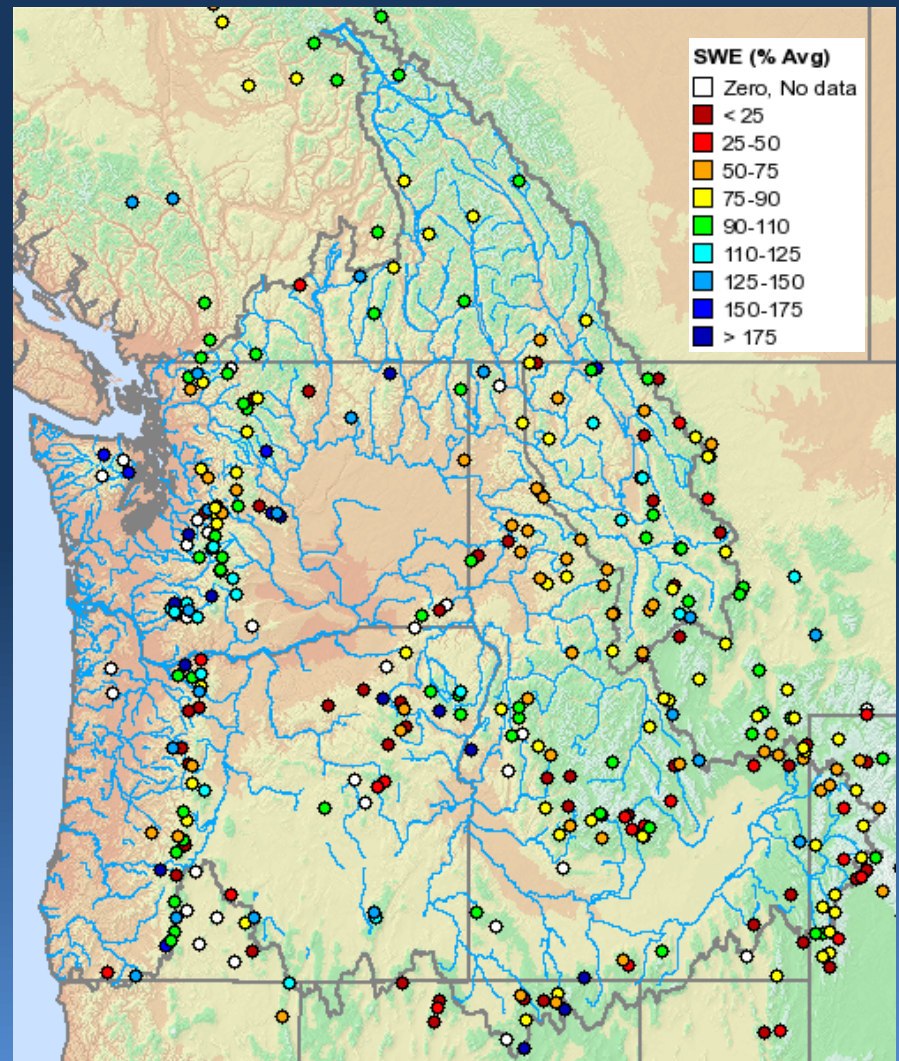
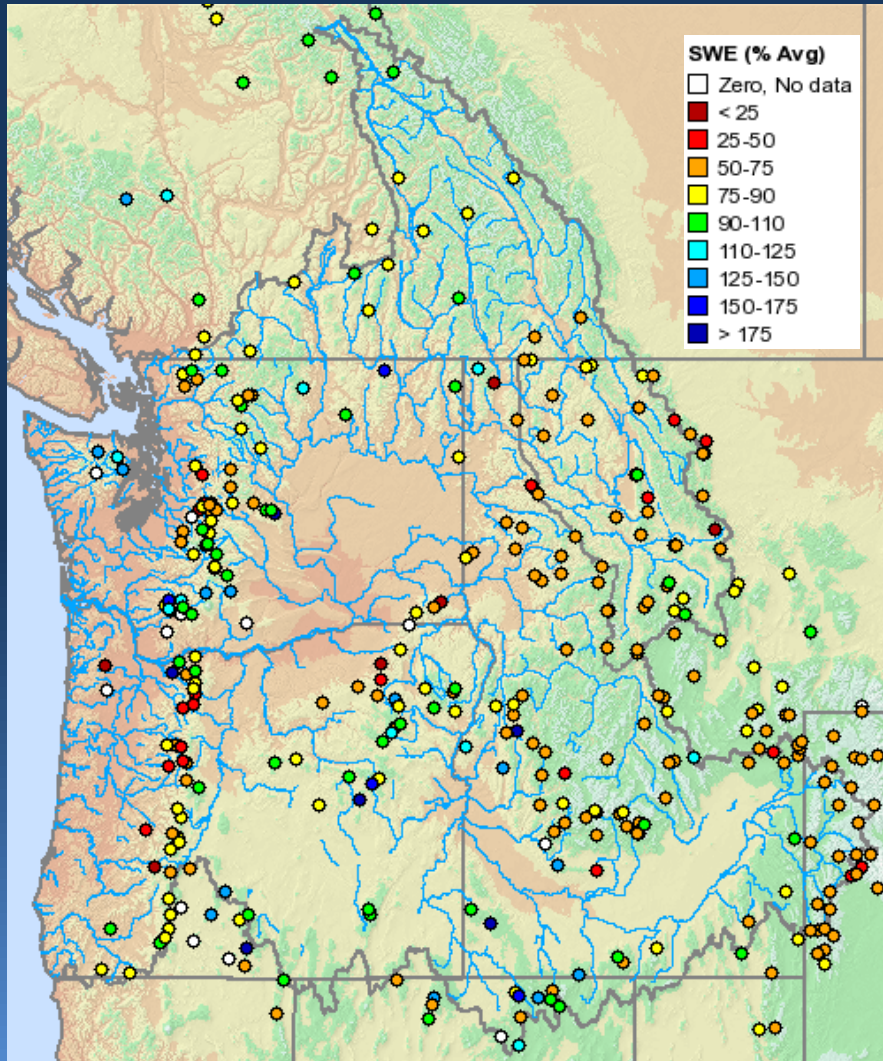


Current Snow Conditions



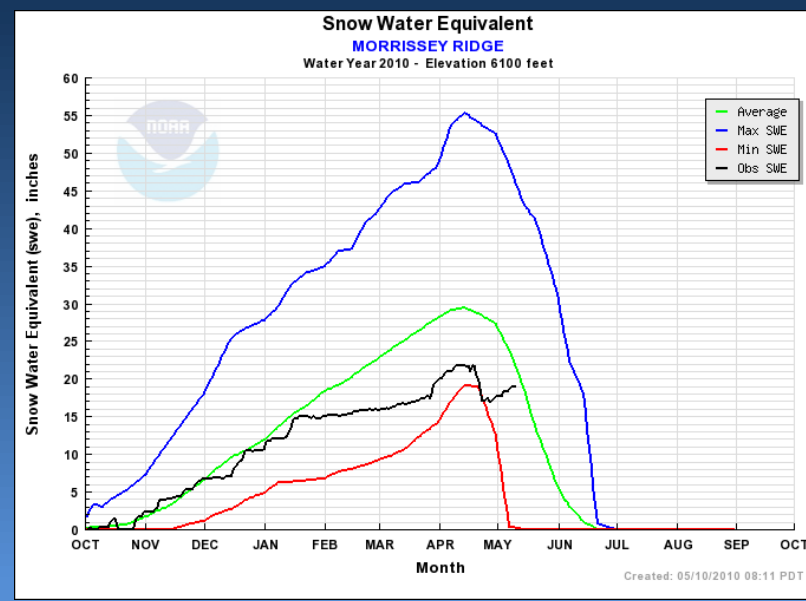
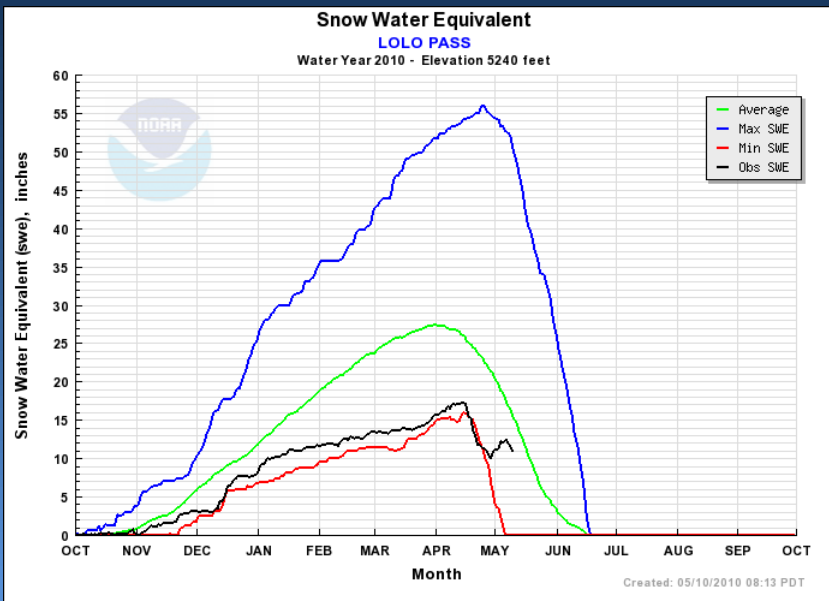
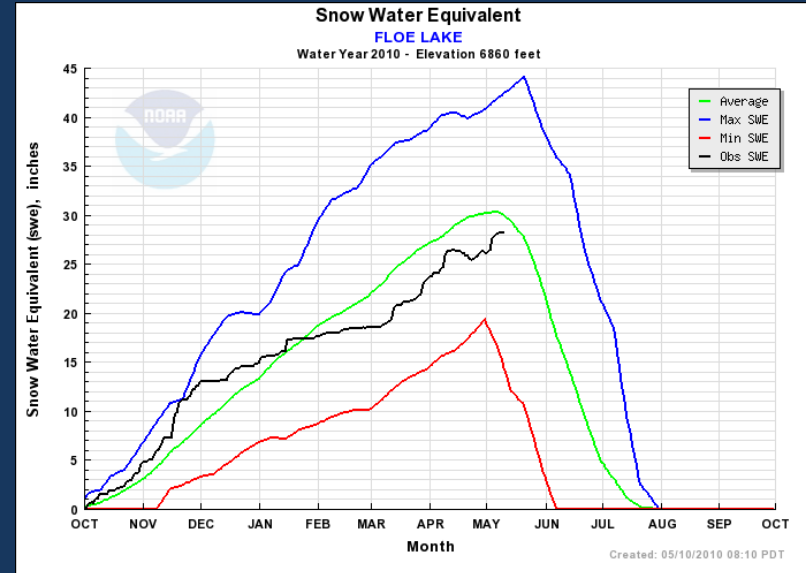
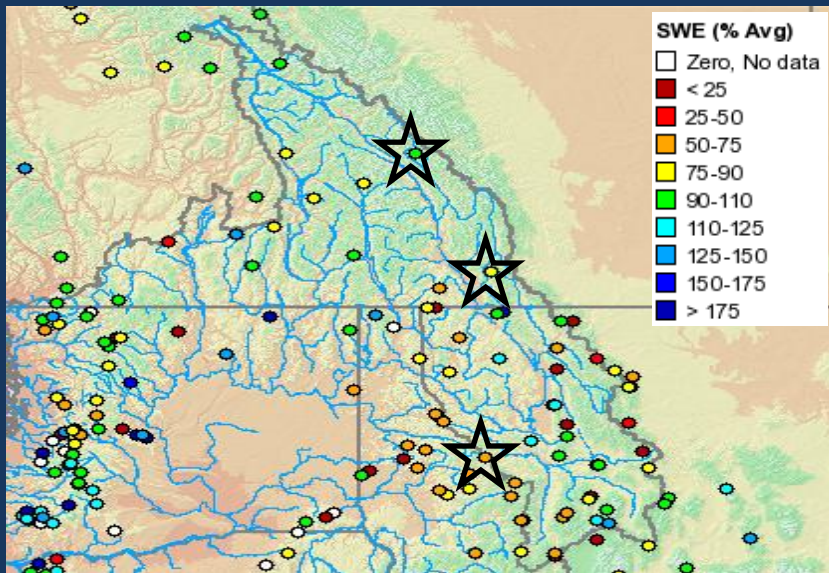
April 5, 2010

May 7, 2010



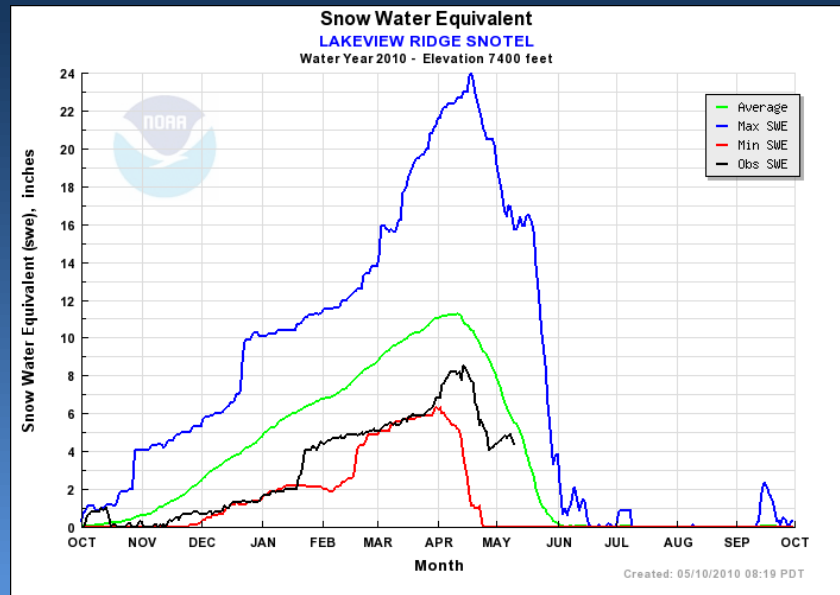
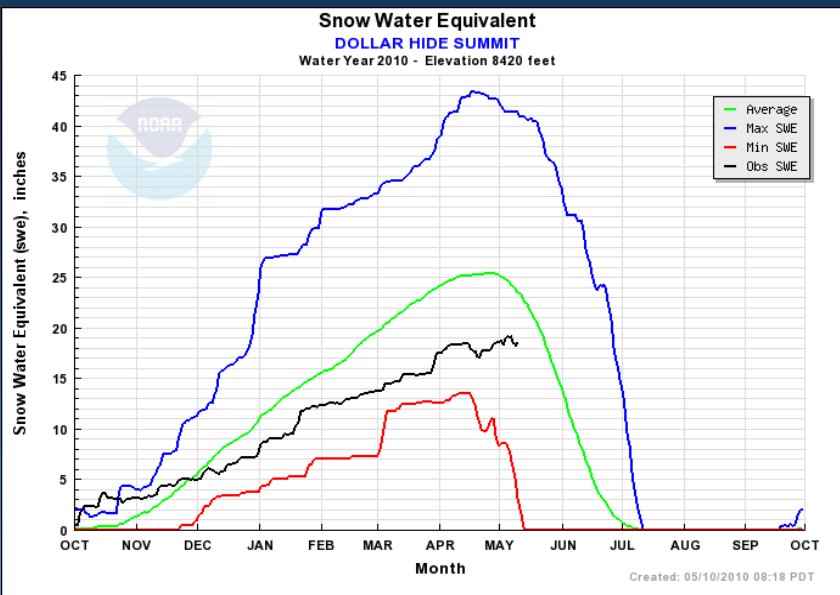
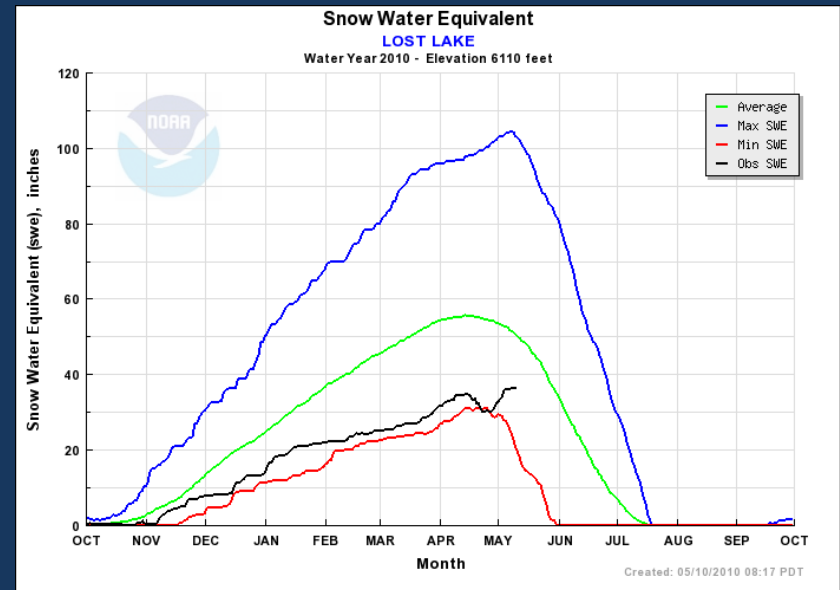
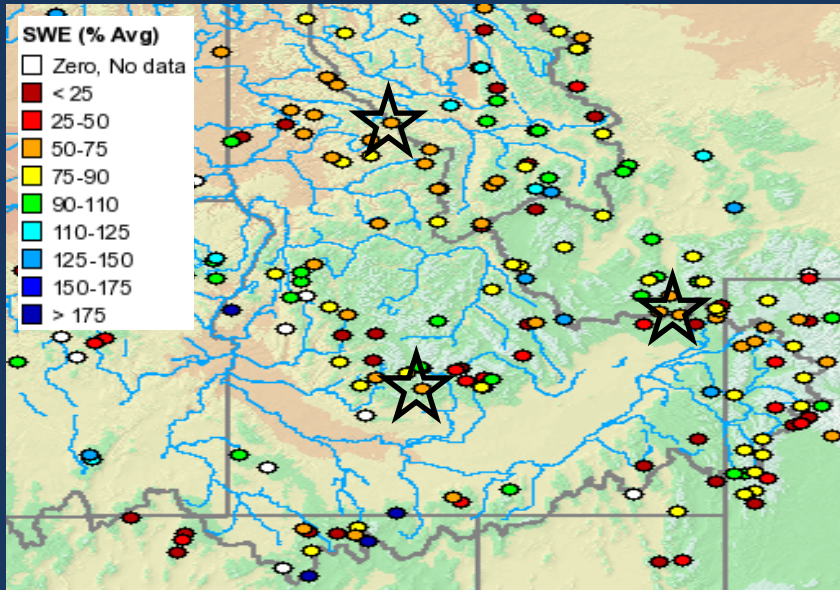


Upper Columbia Snow Conditions

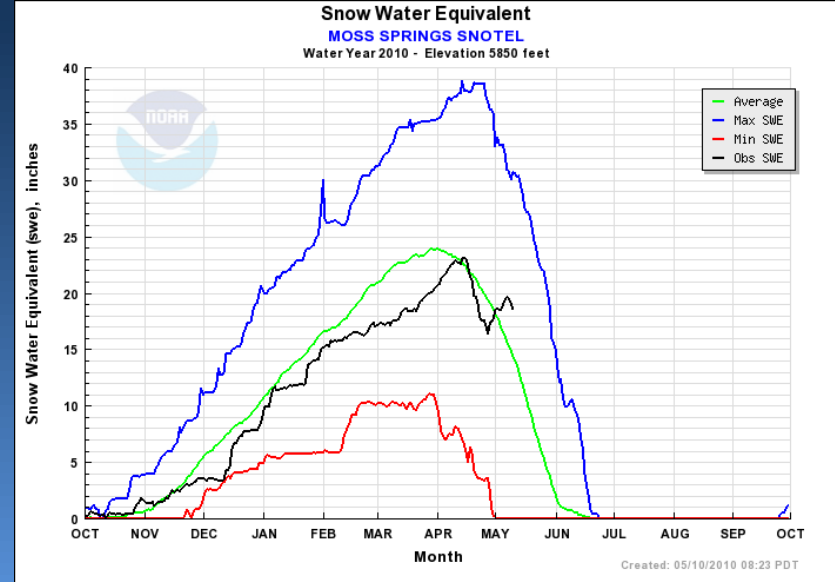
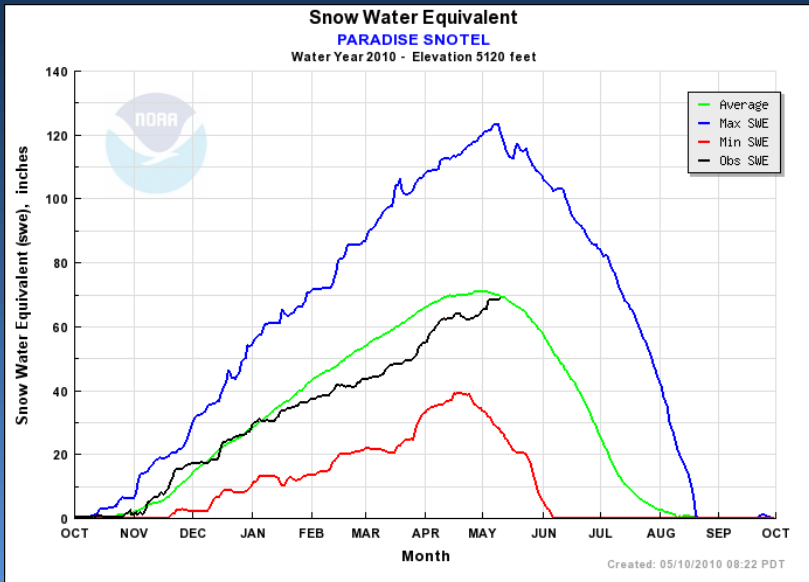
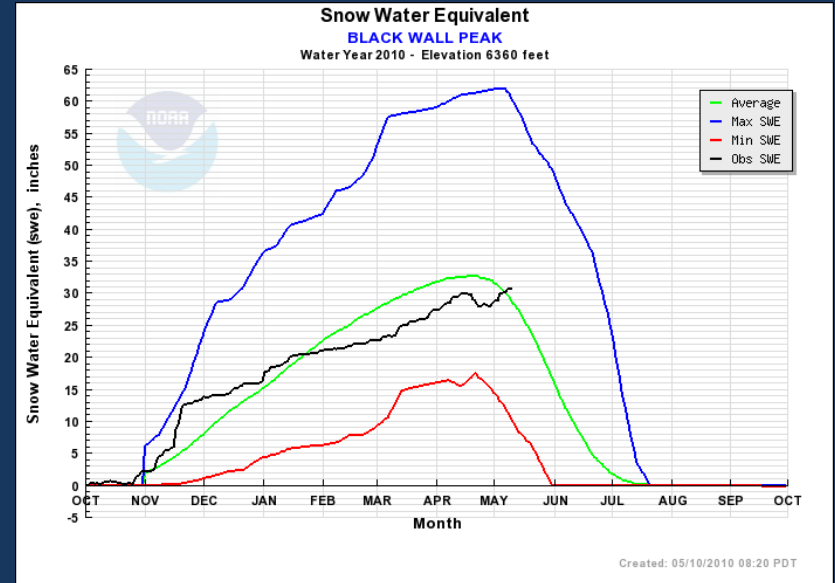
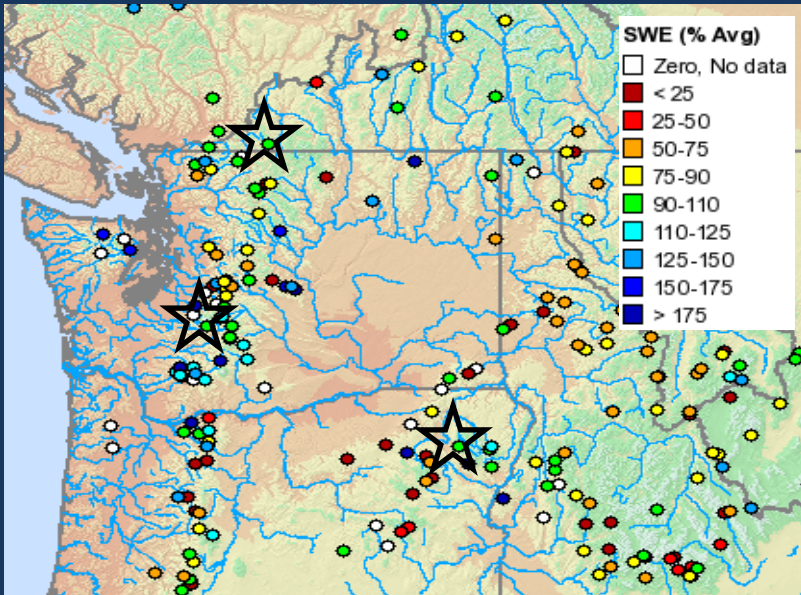




Snake River Snow Conditions



Lower Columbia Snow Conditions





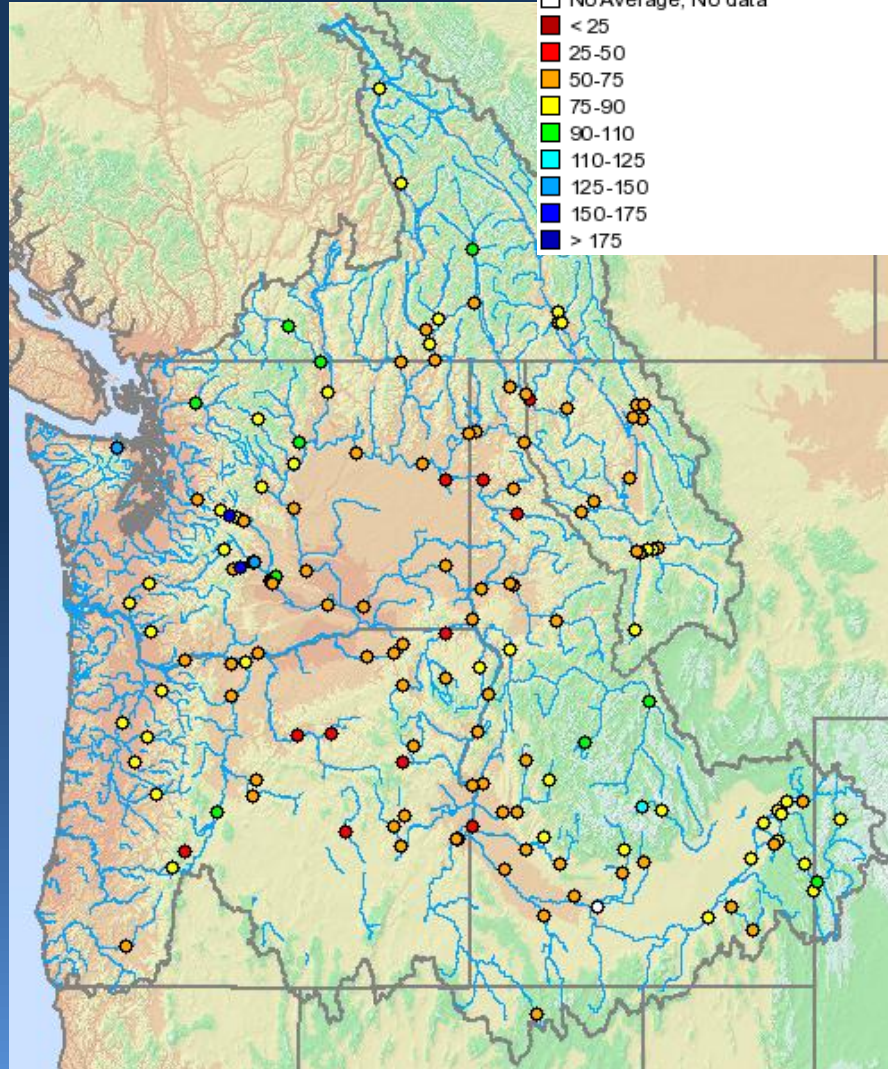
Current Runoff Conditions



May 7, 2010

Water Year Runoff Summary (% Avg)

- No Average, No data
- < 25
- 25-50
- 50-75
- 75-90
- 90-110
- 110-125
- 125-150
- 150-175
- > 175





Future Conditions



Climate Outlooks

Precipitation Assumptions

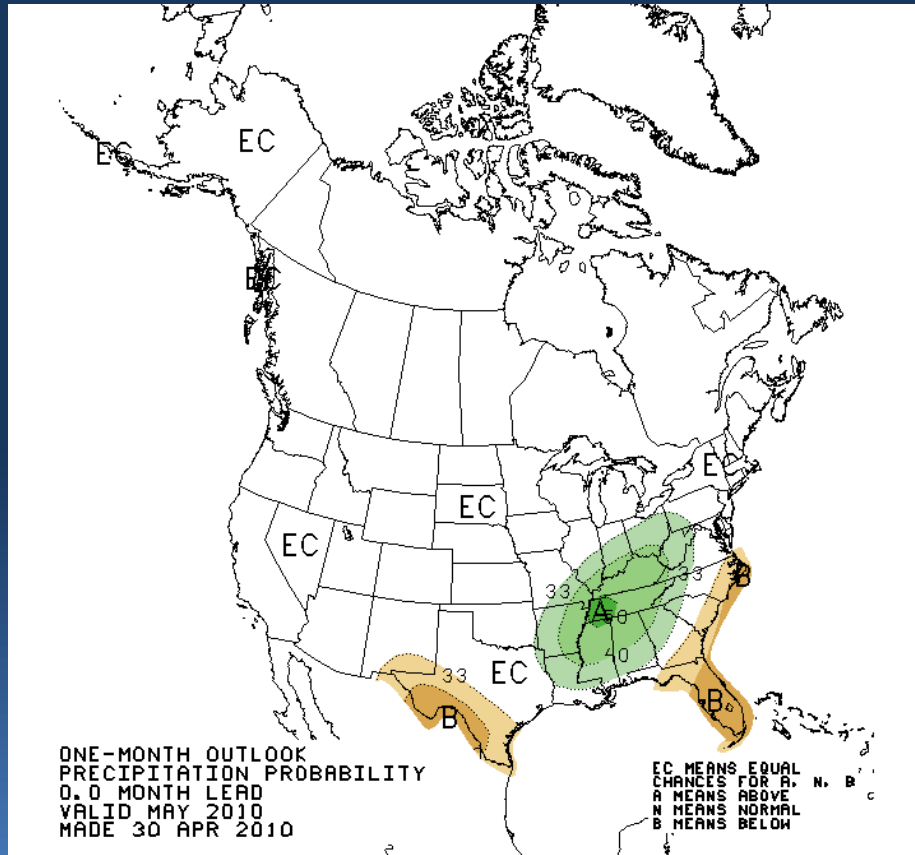
Water Supply Forecasts



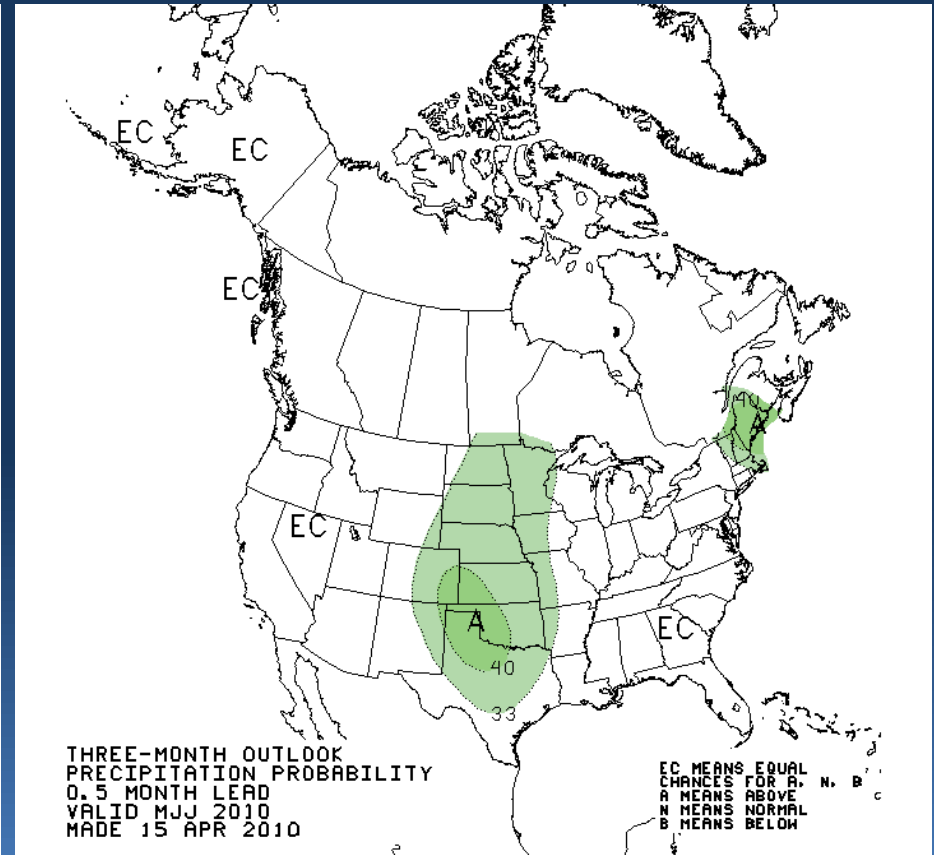
Climate Outlook: Precipitation



Current Month Outlook



Three Month Outlook

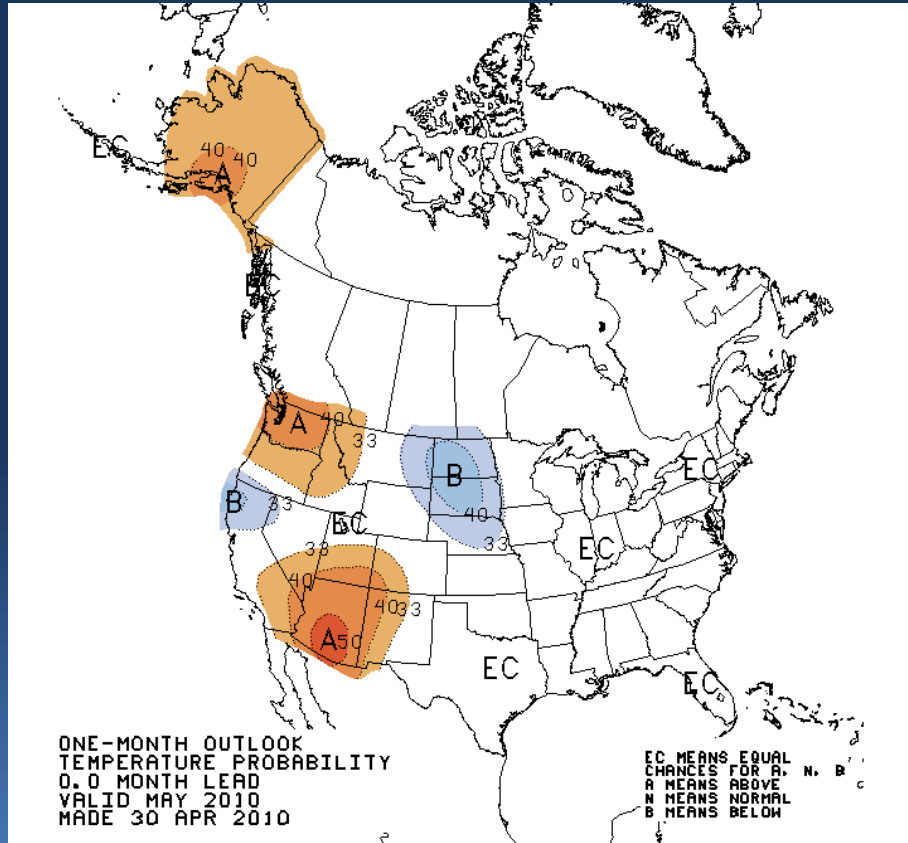




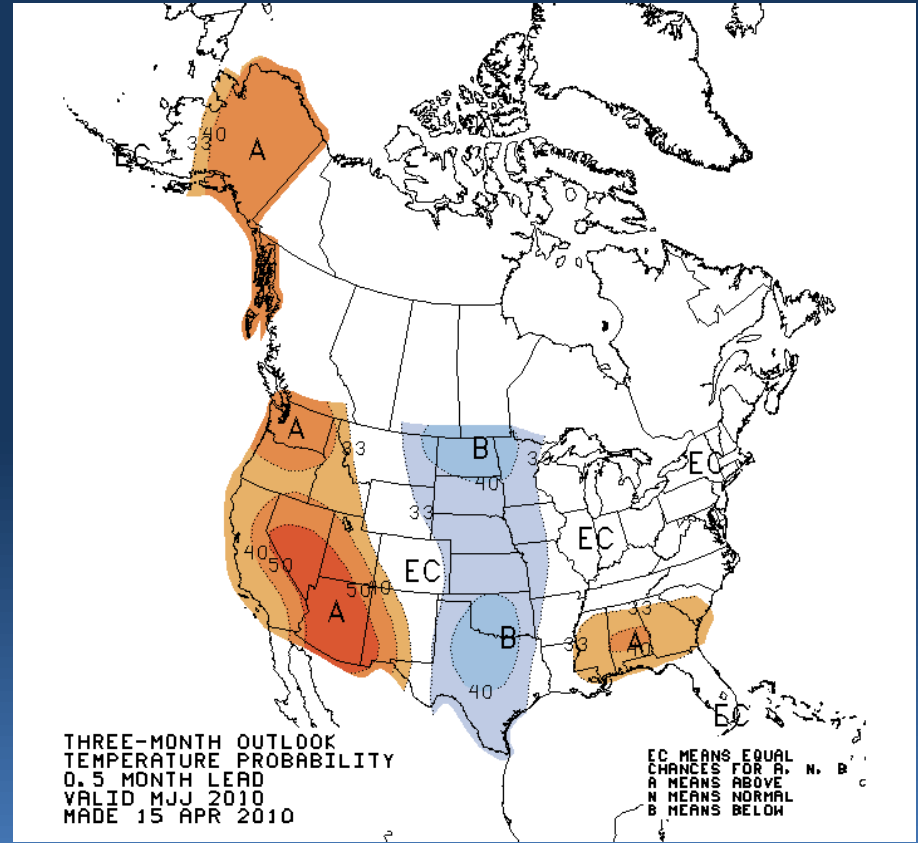
Climate Outlook: Temperature



Current Month Outlook



Three Month Outlook





Model Precipitation Assumptions



May Final Water Supply Forecast:

May Forecast Precipitation 100% of Normal

Apr Final Water Supply Forecast:

April Precipitation 100% of Normal (obs ~ 130%)

Mar Final Water Supply Forecast:

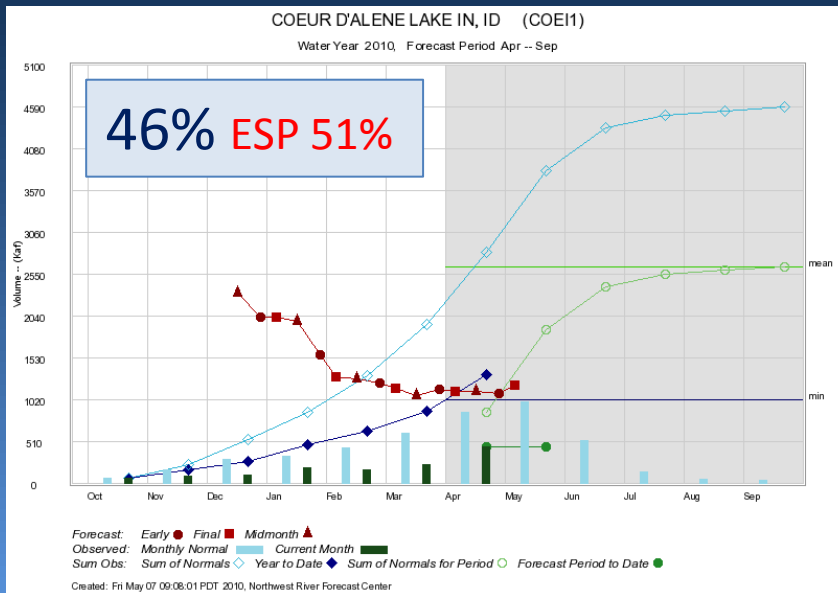
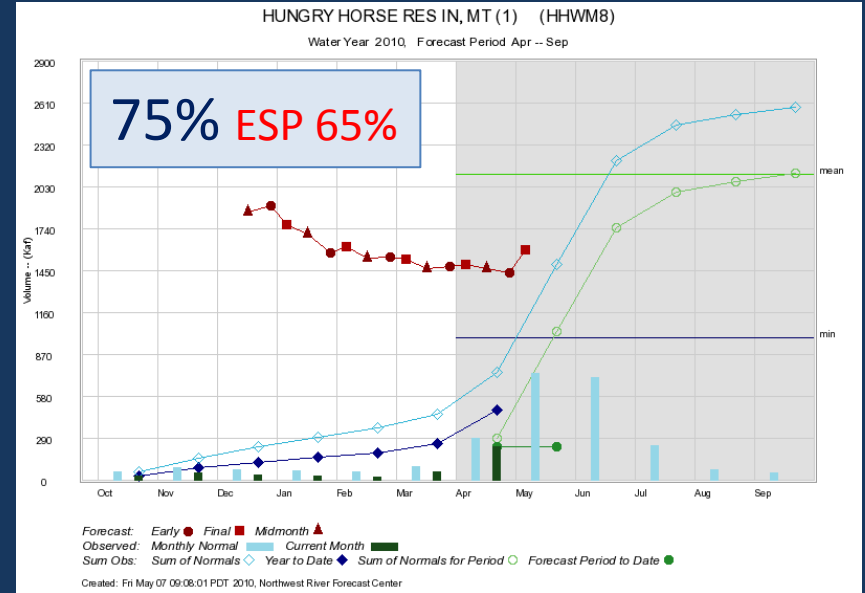
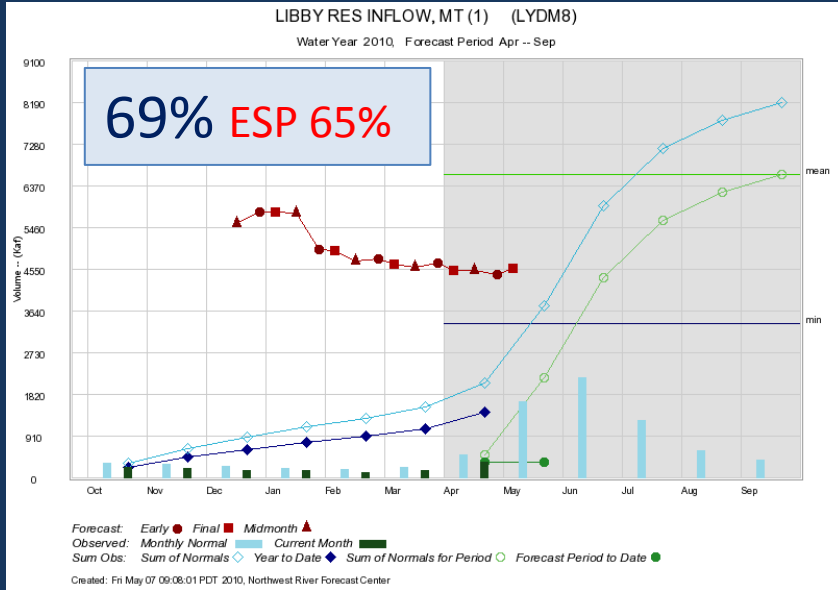
Mar Precipitation 75% of Normal (obs ~ 82%)

Feb Final Water Supply Forecast:

Feb Precipitation 60% of Normal (obs ~48%)

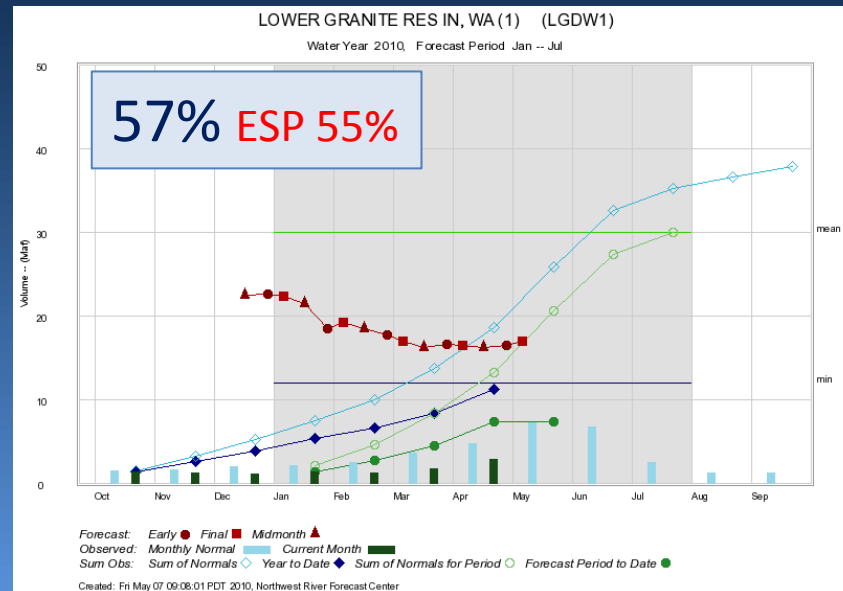
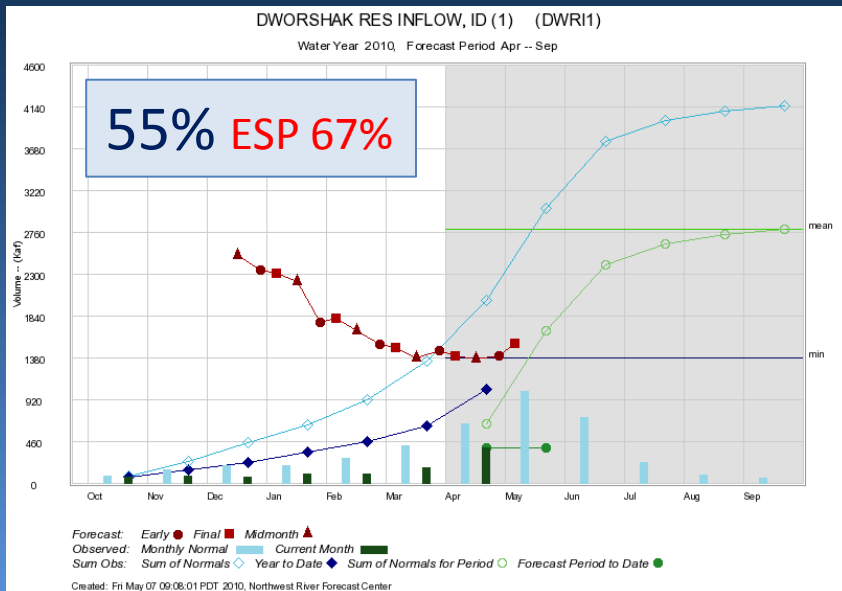
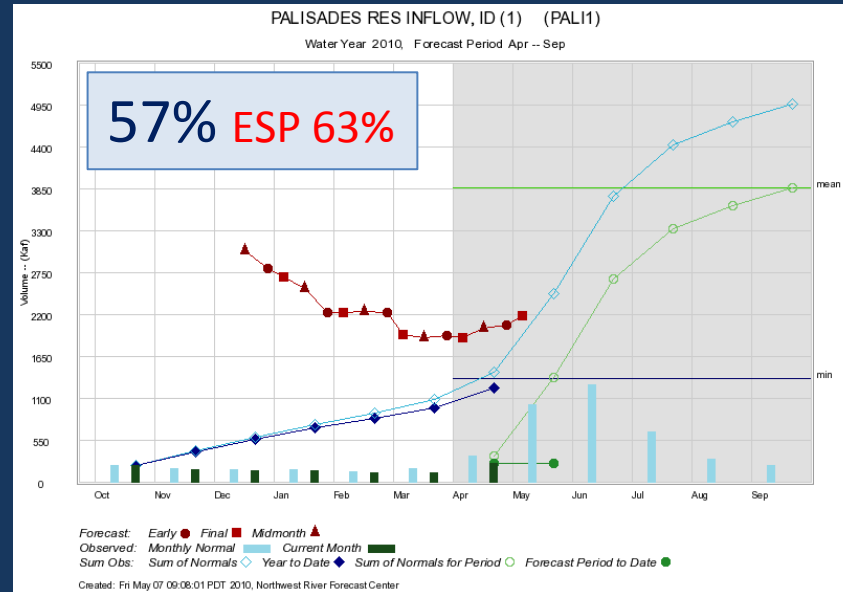
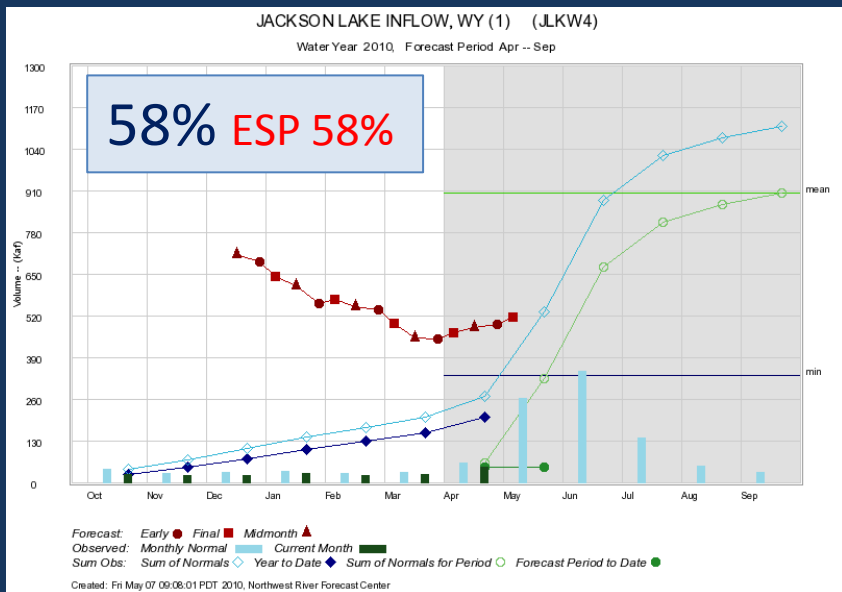


Water Supply Forecast: Upper Columbia



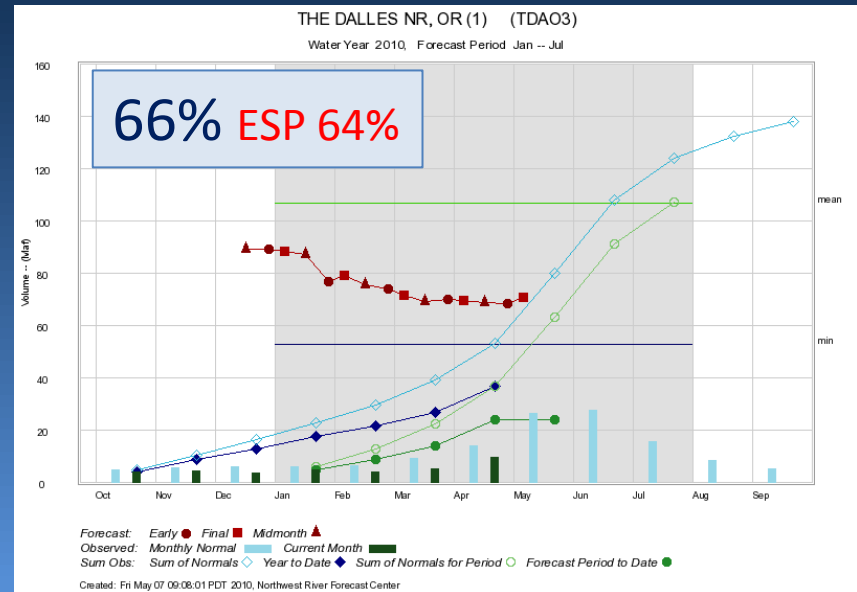
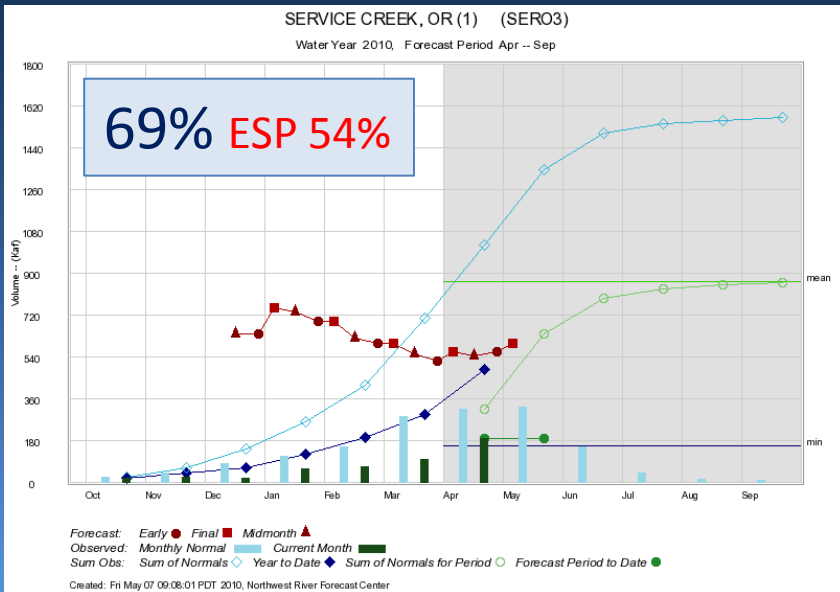
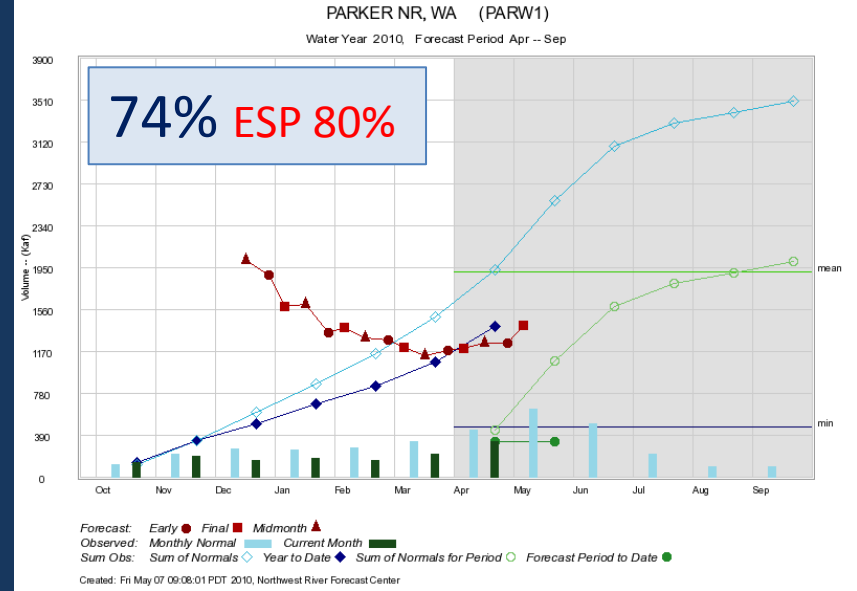
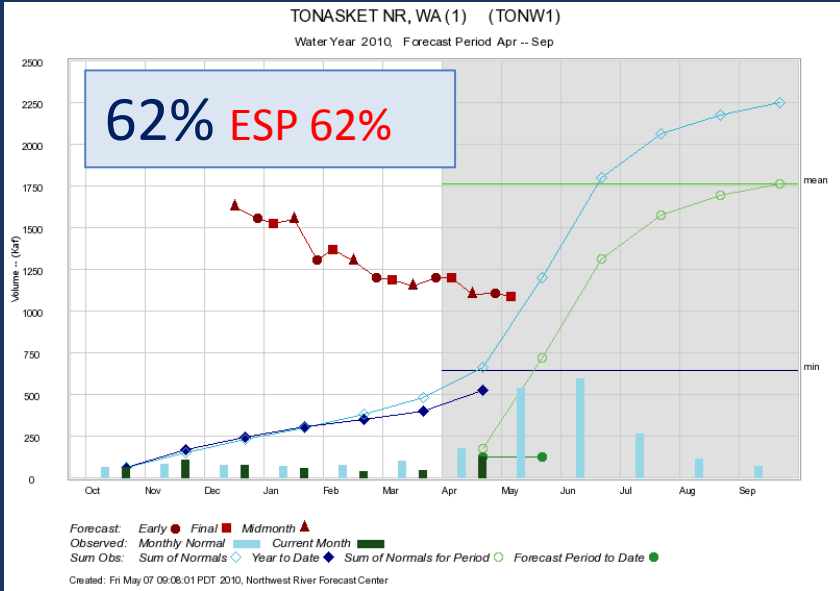


Water Supply Forecast: Snake





Water Supply Forecast: Lower Columbia





Water Supply Forecast Summary



Historical January-July Volumes in MAF
 Mean: 107 Min: 53 Max: 159

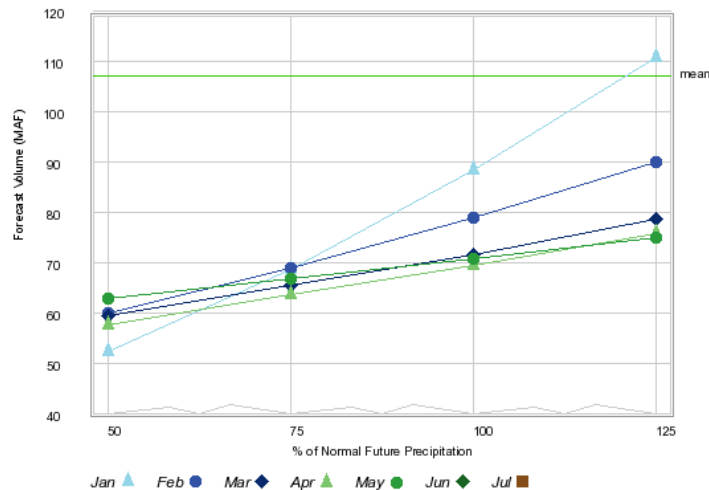
Year	Jan-Jul Vol (MAF)	Rank	Exceedance Prob
1987	78.64	43	84.314 %
1994	76.40	44	86.275 %
1988	75.54	45	88.235 %
1992	73.55	46	90.196 %
1973	70.99	47	92.157 %
2010	70.90	48	94.118 %
2001	58.19	49	96.078 %
1977	53.29	50	98.039 %

Rankings and probabilities based on historical water years 1961 to 2010
[Click for full ranking list of all years](#)

		Contingency Forecast (MAF)			
Date	Type	50%	75%	100%	125%
2010-01-01	Early Bird	52	69	89	111
2010-01-01	Final	52	68	88	111
2010-01-01	Mid Month	56	70	87	105
2010-02-01	Early Bird	57	69	77	99
2010-02-01	Final	60	69	79	90
2010-02-01	Mid Month	63	69	75	83
2010-03-01	Early Bird	61	67	74	81
2010-03-01	Final	59	65	71	78
2010-03-01	Mid Month	57	63	69	75
2010-04-01	Early Bird	58	64	70	76
2010-04-01	Final	57	63	69	75
2010-04-01	Mid Month	61	64	68	72
2010-05-01	Early Bird	60	64	68	73
2010-05-01	Final	63	67	70	75

THE DALLES (TDAO3)

Contingency forecast for 2010, Forecast period: Jan - Jul





Water Supply Forecast: ESP Comparison



COLUMBIA - GRAND COULEE DAM (GCDW1) Forecasts for WY 2010

Official Forecast (Regression) Issued: 2010-05-07 (Description)								ESP Forecasts Issued: 2010-05-04						
Period	Forecast (KAF)	% of Average	5% Forecast	95% Forecast	30yr (1971-2000) Average	Max of Record	Min of Record	Forecast Period	ESP Forecasts for Forecast Period (KAF)					Obs Flow From Start of Period To 5/3/2010
									90 % Exceedance Probability	70 % Exceedance Probability	50 % Exceedance Probability	30 % Exceedance Probability	10 % Exceedance Probability	
JAN-SEP	53900.0	74	60655.0	47145.0	73040.0	103500.0	44000.0	JAN-SEP	47013.4	49173.4	51051.4	52458.8	54496.3	11025.0
MAY-SEP	42900.0	76	49655.0	36145.0	56700.0			MAY-SEP	35988.4	38148.4	40026.4	41433.8	43471.3	0.0
APR-JUL	40600.0	75	47355.0	33845.0	53850.0	76239.0	31885.0	APR-JUL	33584.2	34986.1	36167.7	37318.5	39801.2	5190.0
APR-SEP	48100.0	75	54855.0	41345.0	63990.0	88512.0	39829.0	APR-SEP	41178.4	43338.4	45216.4	46623.8	48661.3	5190.0
MAY-JUL	35400.0	76	42155.0	28645.0	46560.0			MAY-JUL	28394.2	29796.1	30977.7	32128.5	34611.2	0.0
JAN-JUL	46400.0	74	53155.0	39645.0	62900.0	91140.0	34760.0	JAN-JUL	39419.2	40821.1	42002.7	43153.5	45636.2	11025.0

SNAKE - LOWER GRANITE DAM (LGDW1) Forecasts for WY 2010

Official Forecast (Regression) Issued: 2010-05-07 (Description)								ESP Forecasts Issued: 2010-05-04						
Period	Forecast (KAF)	% of Average	5% Forecast	95% Forecast	30yr (1971-2000) Average	Max of Record	Min of Record	Forecast Period	ESP Forecasts for Forecast Period (KAF)					Obs Flow From Start of Period To 5/3/2010
									90 % Exceedance Probability	70 % Exceedance Probability	50 % Exceedance Probability	30 % Exceedance Probability	10 % Exceedance Probability	
JAN-SEP	18500.0	57	22651.0	14349.0	32610.0	53055.0	14754.0	JAN-SEP	18096.8	18444.3	18933.4	19586.5	20906.1	7481.0
MAY-SEP	11000.0	57	15151.0	6849.0	19290.0			MAY-SEP	10615.8	10963.3	11452.4	12105.5	13425.1	0.0
APR-JUL	12400.0	58	16551.0	8249.0	21550.0	33528.0	8634.0	APR-JUL	11157.1	11448.8	11918.8	12499.6	13761.6	2890.0
APR-SEP	13900.0	58	18051.0	9749.0	24140.0	37104.0	10420.0	APR-SEP	13505.8	13853.3	14342.4	14995.5	16315.1	2890.0
MAY-JUL	9510.0	57	13661.0	5359.0	16700.0			MAY-JUL	8267.1	8558.8	9028.8	9609.6	10871.6	0.0
JAN-JUL	17000.0	57	21151.0	12849.0	30020.0	49478.0	12878.0	JAN-JUL	15748.1	16039.8	16509.8	17090.6	18352.6	7481.0

COLUMBIA - THE DALLES DAM (TDAO3) Forecasts for WY 2010

Official Forecast (Regression) Issued: 2010-05-07 (Description)								ESP Forecasts Issued: 2010-05-04						
Period	Forecast (KAF)	% of Average	5% Forecast	95% Forecast	30yr (1971-2000) Average	Max of Record	Min of Record	Forecast Period	ESP Forecasts for Forecast Period (KAF)					Obs Flow From Start of Period To 5/3/2010
									90 % Exceedance Probability	70 % Exceedance Probability	50 % Exceedance Probability	30 % Exceedance Probability	10 % Exceedance Probability	
JAN-SEP	80200.0	66	91088.0	69312.0	121300.0	176593.0	64517.0	JAN-SEP	76771.0	79889.8	82269.4	83601.9	86573.8	24066.0
MAY-SEP	56100.0	66	66988.0	45212.0	84470.0			MAY-SEP	52705.0	55823.8	58203.4	59535.9	62507.8	0.0
APR-AUG	62200.0	67	73088.0	51312.0	93090.0	133733.0	49445.0	APR-AUG	57839.6	61023.6	62571.9	63831.1	66782.4	9738.0
JAN-AUG	76500.0	66	87388.0	65612.0	115700.0	168669.0	59871.0	JAN-AUG	72167.6	75351.6	76899.9	78159.1	81110.4	24066.0
MAY-AUG	52400.0	66	63288.0	41512.0	78910.0			MAY-AUG	48101.6	51285.6	52833.9	54093.1	57044.4	0.0
APR-SEP	65900.0	67	76788.0	55012.0	98650.0	141056.0	54091.0	APR-SEP	62443.0	65561.8	67941.4	69273.9	72245.8	9738.0
JAN-JUL	70900.0	66	81788.0	60012.0	107300.0	159000.0	53359.0	JAN-JUL	65665.2	67768.3	69223.1	70959.3	74453.5	24066.0



NWRFC Water Supply Webpage

www.nwrfc.noaa.gov



National Weather Service
Northwest
River Forecast Center

[Home](#)
[Site Map](#)
[News](#)
[Organization](#)

Water Supply Forecast (Issued 02-05-2010)

Map data updated 02/05.16:55 GMT, 02/05.08:55 PST.

Join Us LIVE for a Water Supply Briefing -- [click here for more Information](#)
[click for Water Supply Briefing -- 01/11/2010](#)

Place cursor over point for Station Info, click point for data plot.
 Select Zoom Option to zoom in on map
Click to: [Select](#) | [Zoom](#) **Zoom to:** [1x](#) [4x](#) [8x](#)

Legend

Water Supply Forecast (% Avg)

- No Average, No data
- < 25
- 25-50
- 50-75
- 75-90
- 90-110
- 110-125
- 125-150
- 150-175
- > 175

Point Info/Search

Station Name

ID

Forecast Period

Volume Forecast (KAF)

% of Avg (1971-2000)

5% Forecast (KAF)

95% Forecast (KAF)

30-YR Avg (KAF)

[Click for Summary List of Water Supply Forecasts](#)
[Click for Comma Delimited WS Forecasts \(Issued 02-05-2010\)](#)
 (Description)

Water Supply Forecast Information

[Summary](#)

[Western Water Sup](#)

ESP Water Supply

[ESP Natural](#)

[ESP Interactive](#)

Peakflow

[Description](#)

[Verification](#)

Inputs

[Precipitation](#)

[Temperature](#)

[Snow](#)

[Runoff](#)

Descriptive Information

[Summary](#)

[Schedule](#)

[Fcst Locations](#)

[Publications](#)

[Return Main Menu](#)