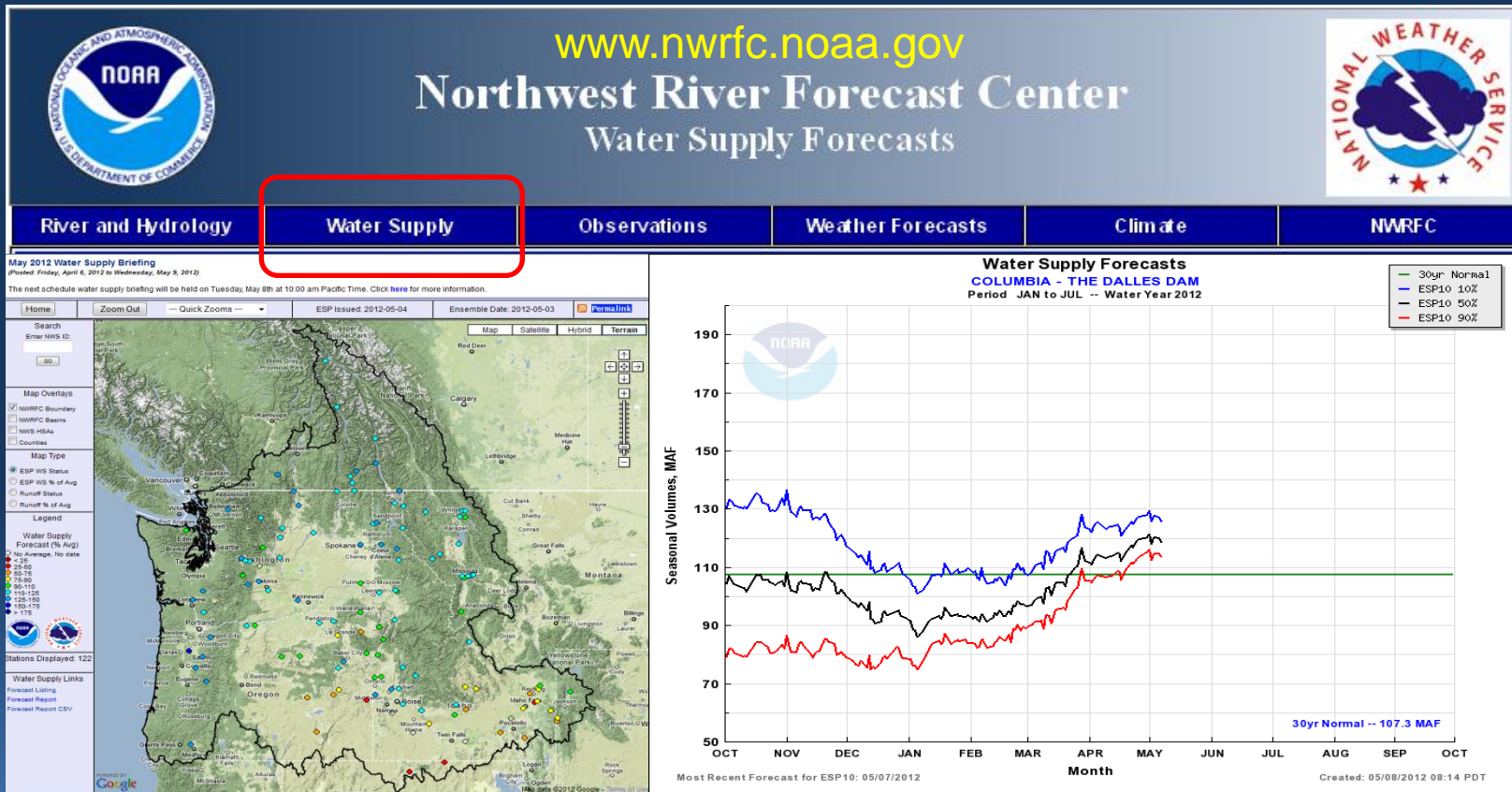


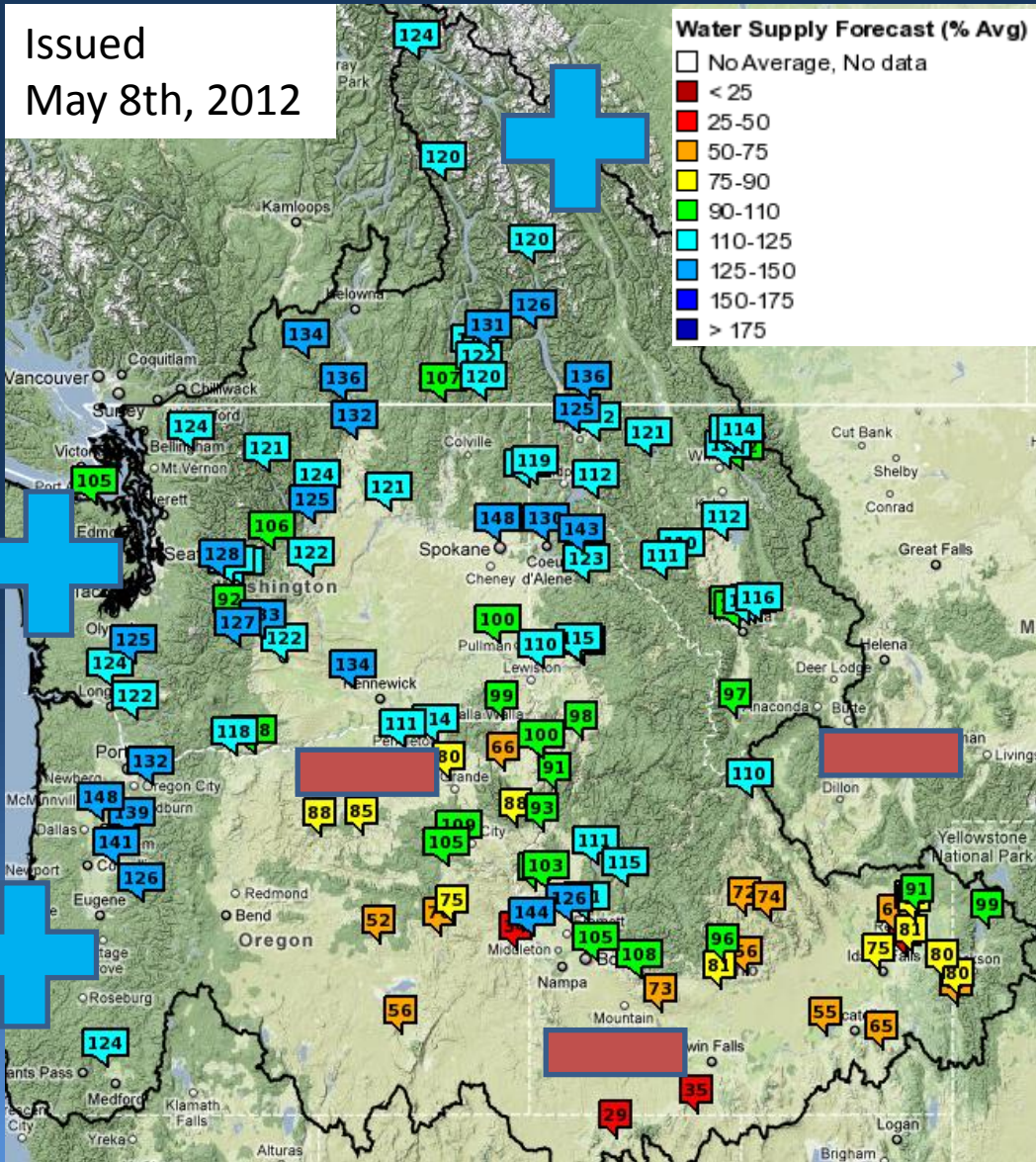
May 2012 Water Supply Briefing



Steve King, NWRFC
Stephen.King@noaa.gov
(503)326-7291



Water Supply Summary



Increase

Decrease



Observed Conditions

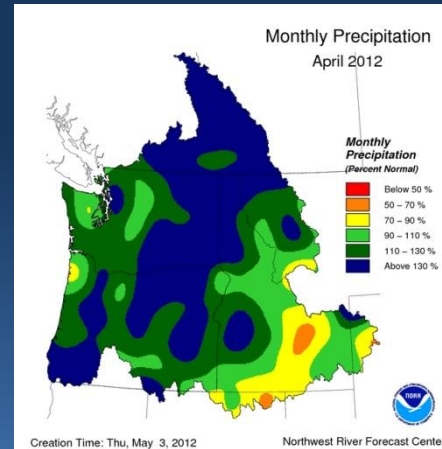
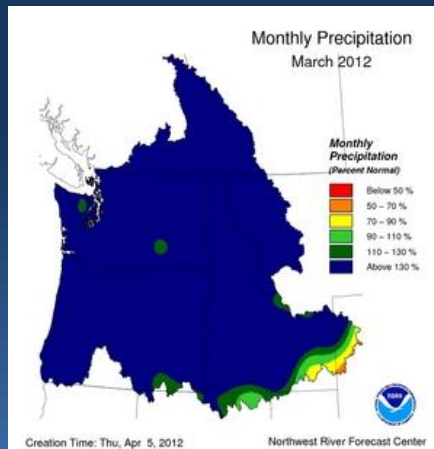
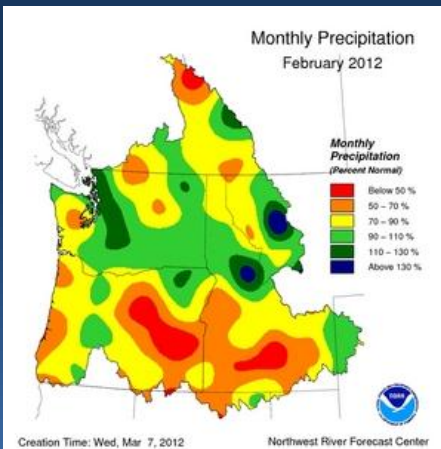
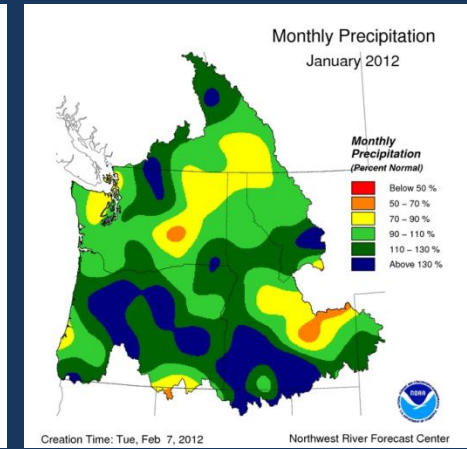
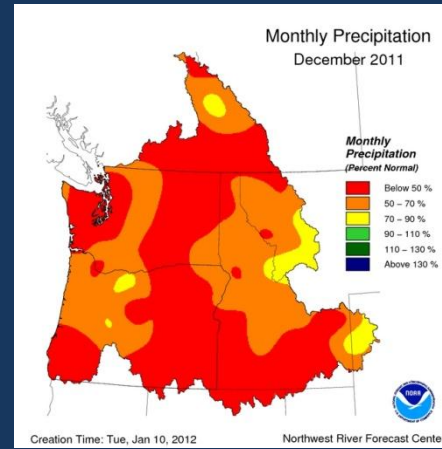
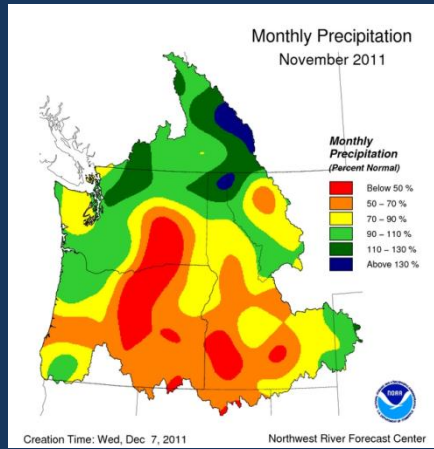
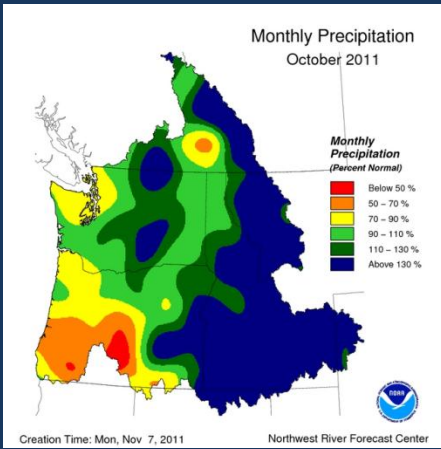


Precipitation

Snowpack



Observed Monthly Precipitation

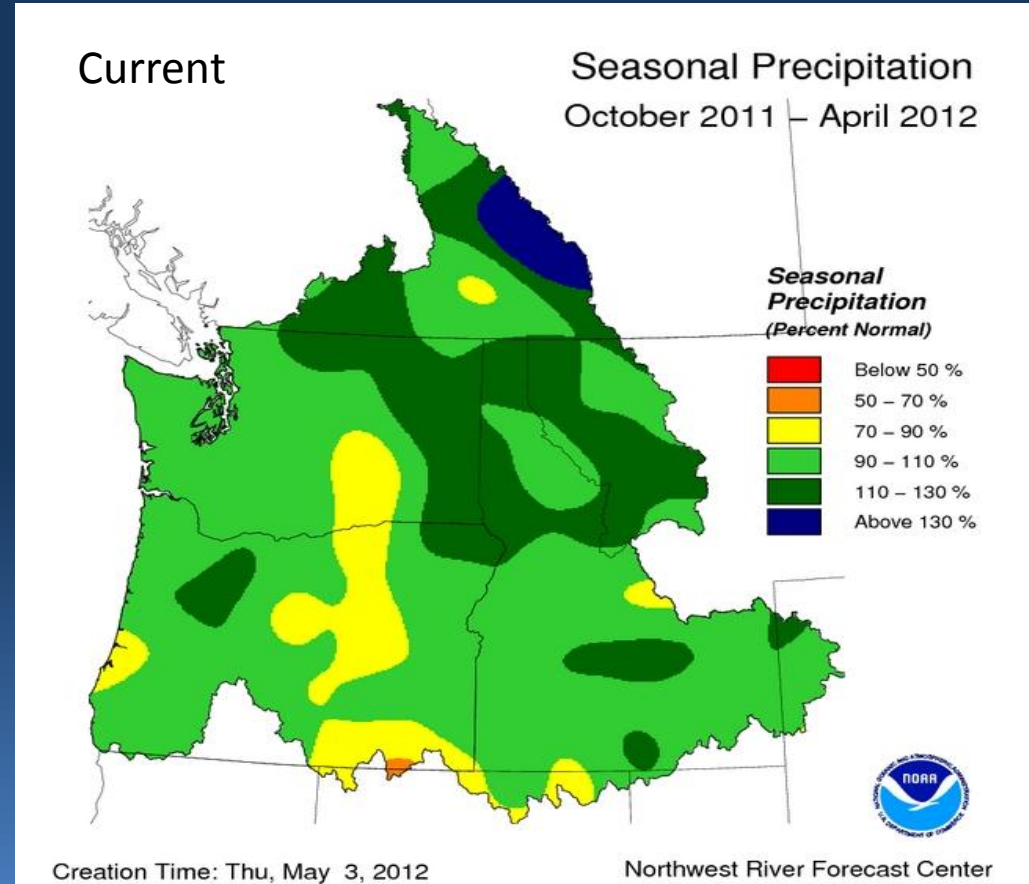
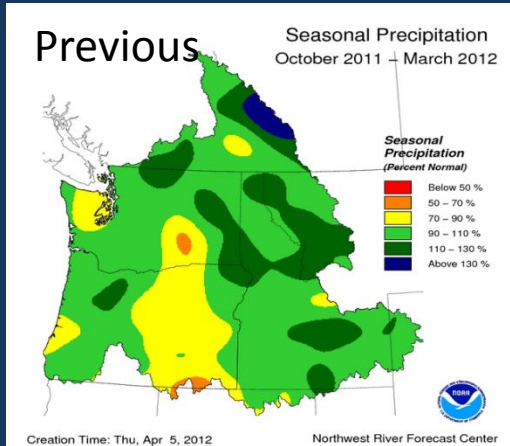


Observed April Precipitation

above Grand Coulee = 141%
above Ice Harbor = 113%
above The Dalles = 127%



Observed Seasonal Precipitation



Observed Oct 1-Apr 30
Precipitation

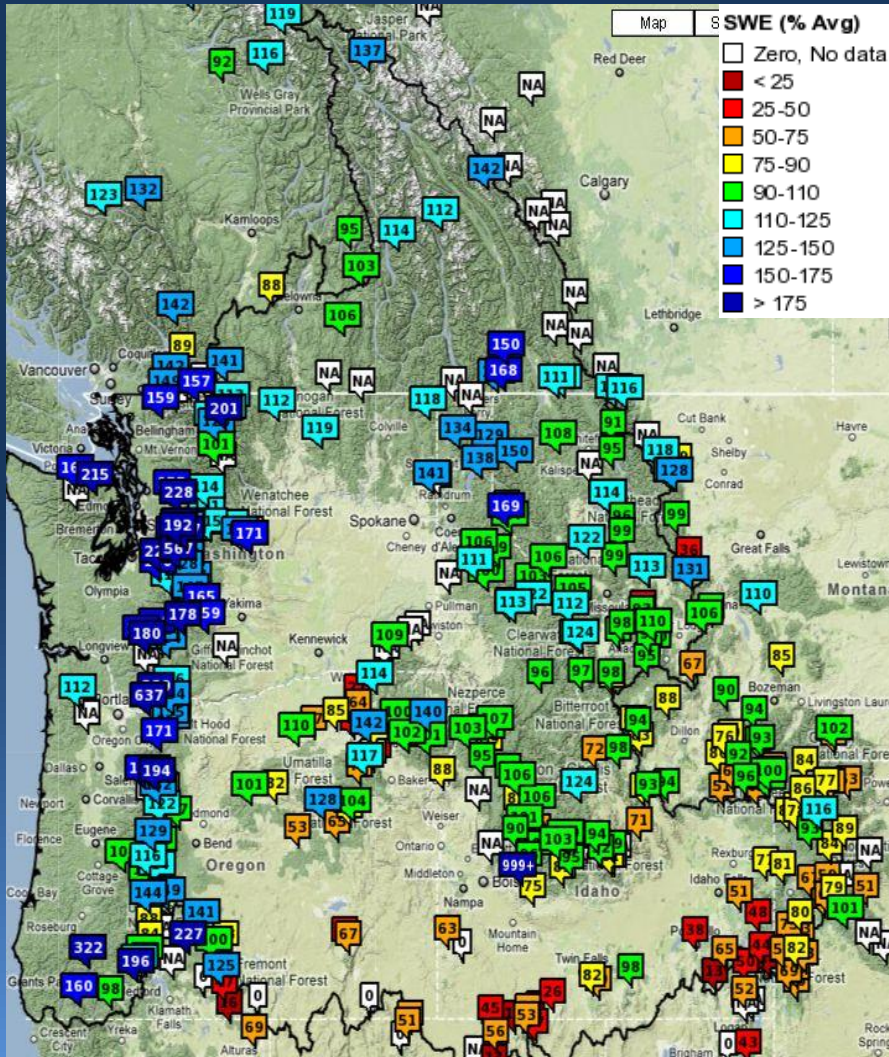
above Grand Coulee = 114%
above Ice Harbor = 106%
above The Dalles = 110%



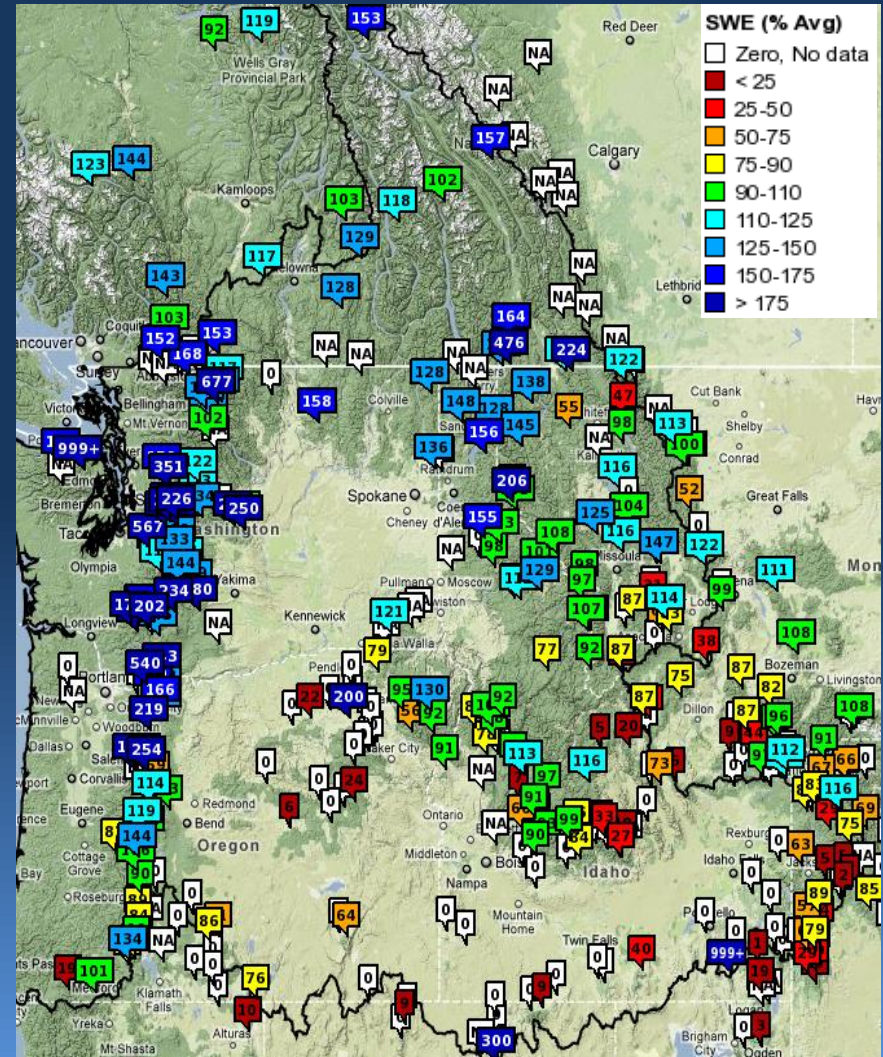
Current Snow Conditions



April 5, 2012

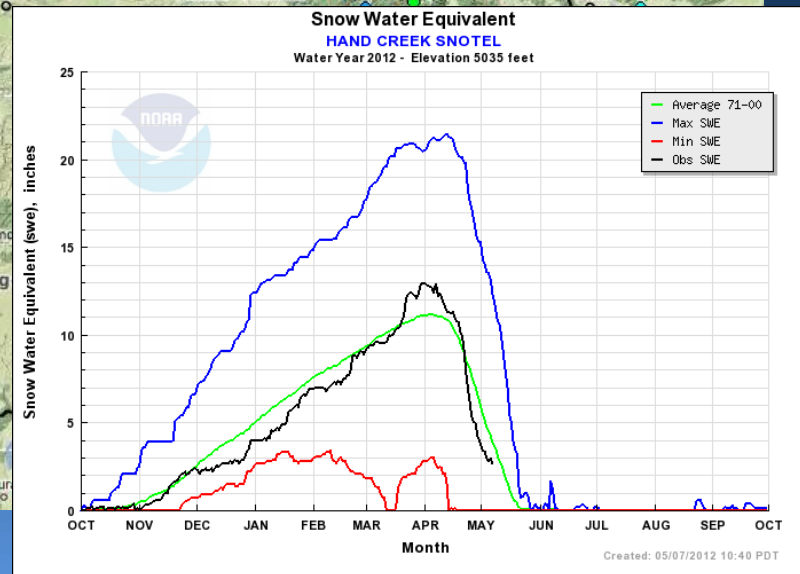
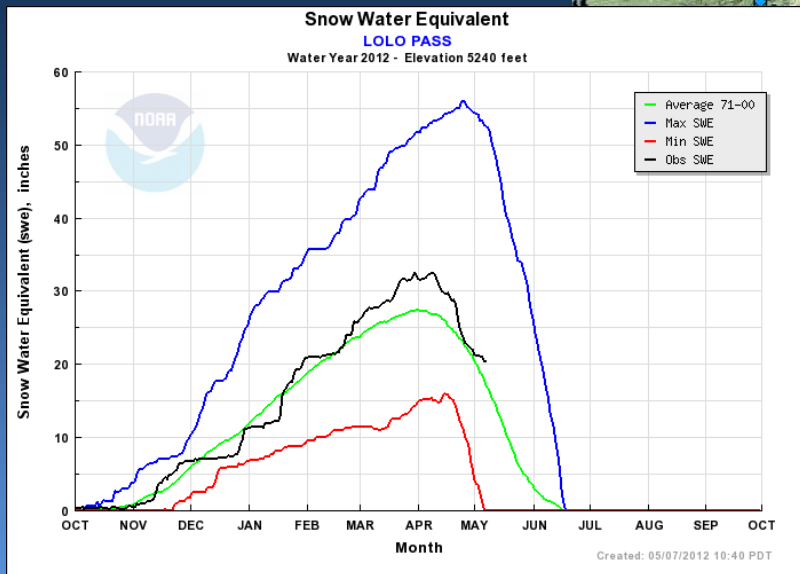
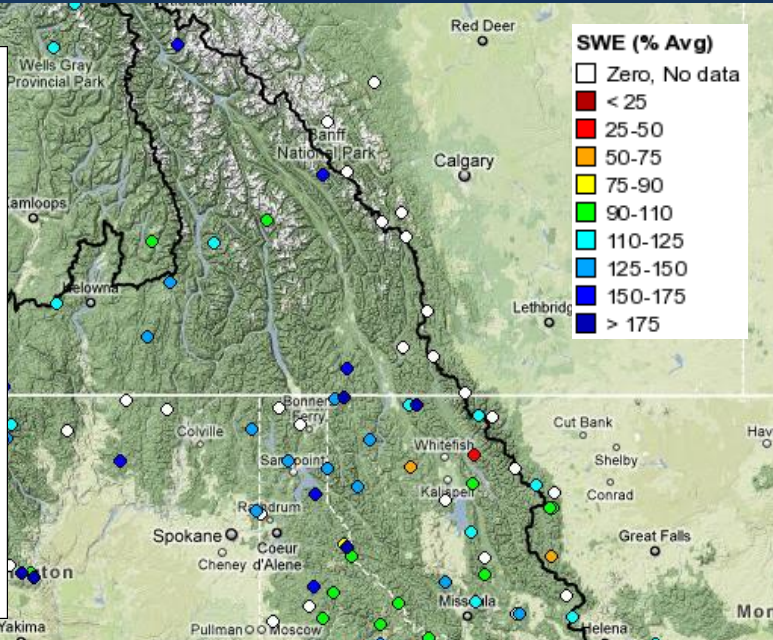
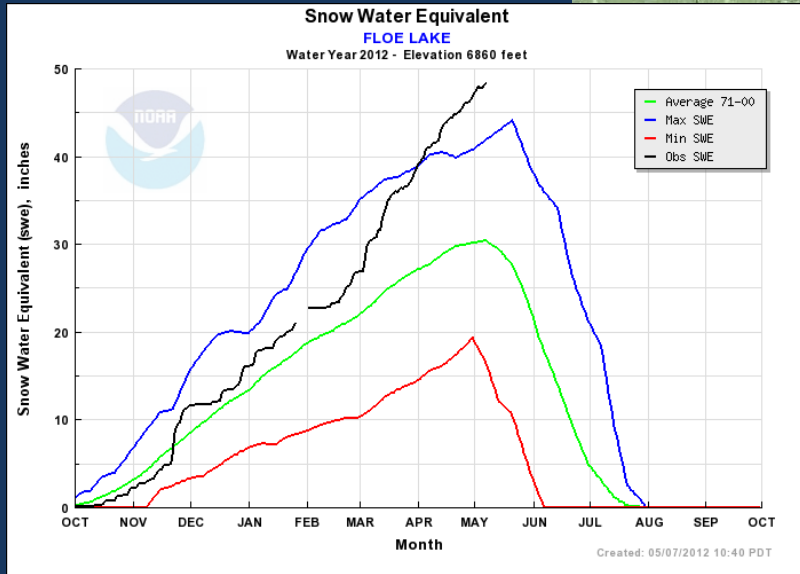


May 7, 2012



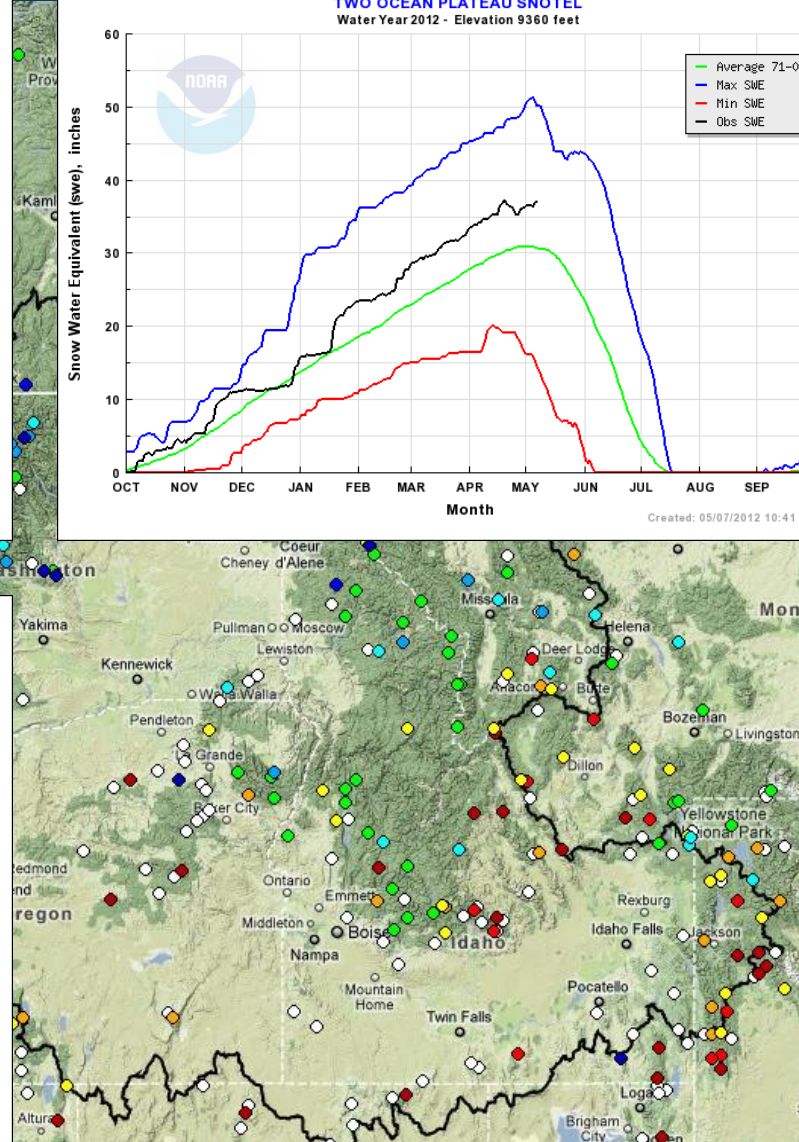
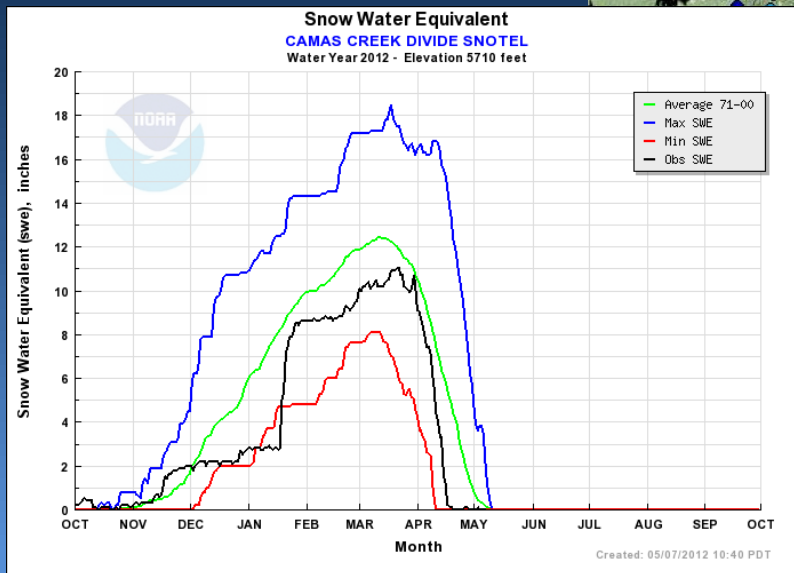
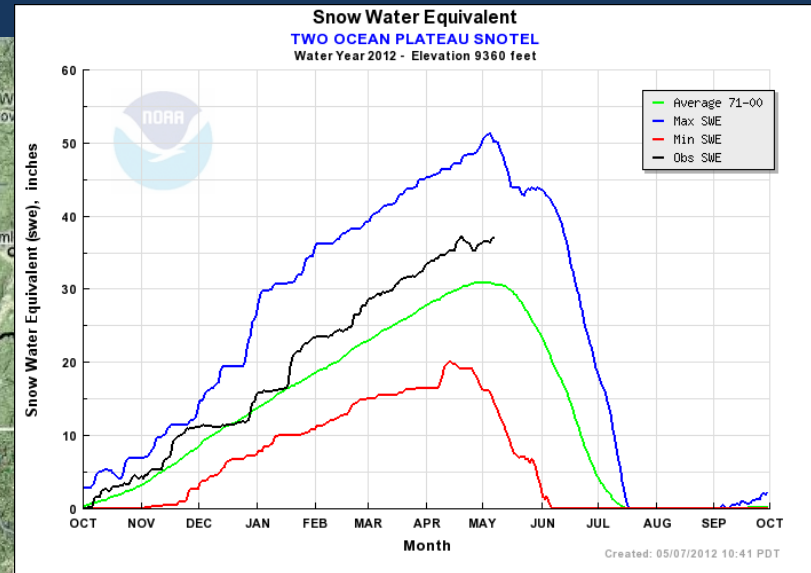
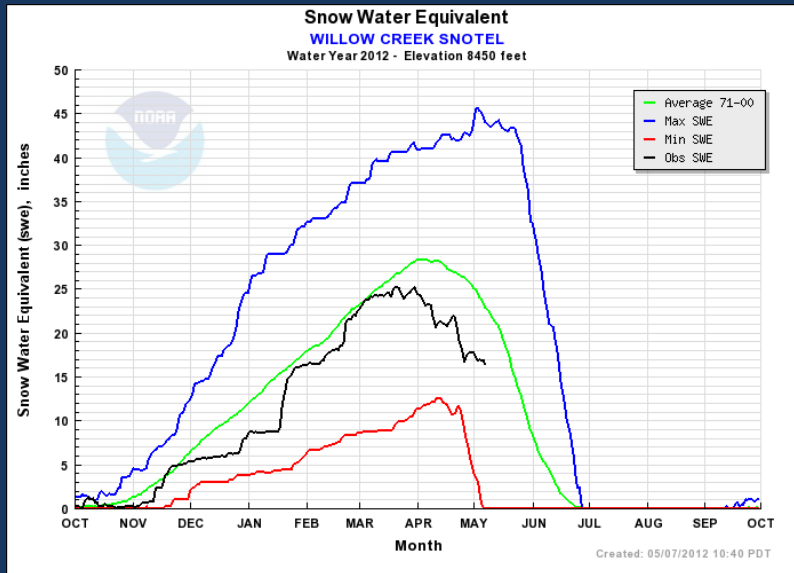


Upper Columbia Snow Conditions





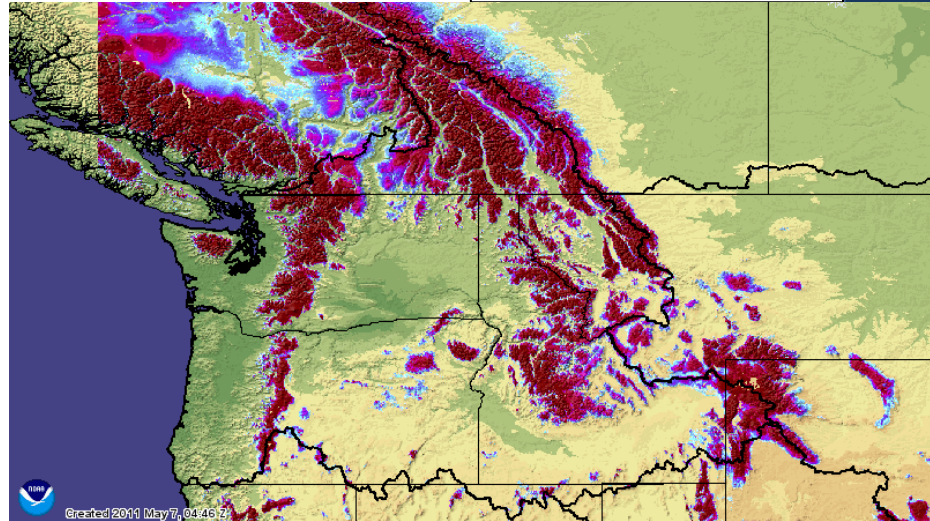
Snake River Snow Conditions



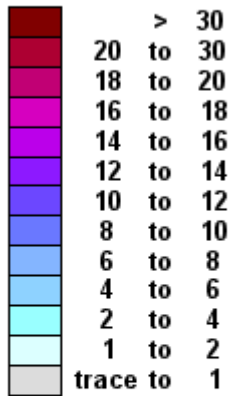
Snow Water Equivalent

2012 compared to 2011

May 6, 2011

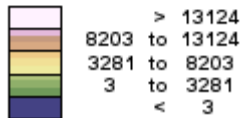


Inches of water equivalent

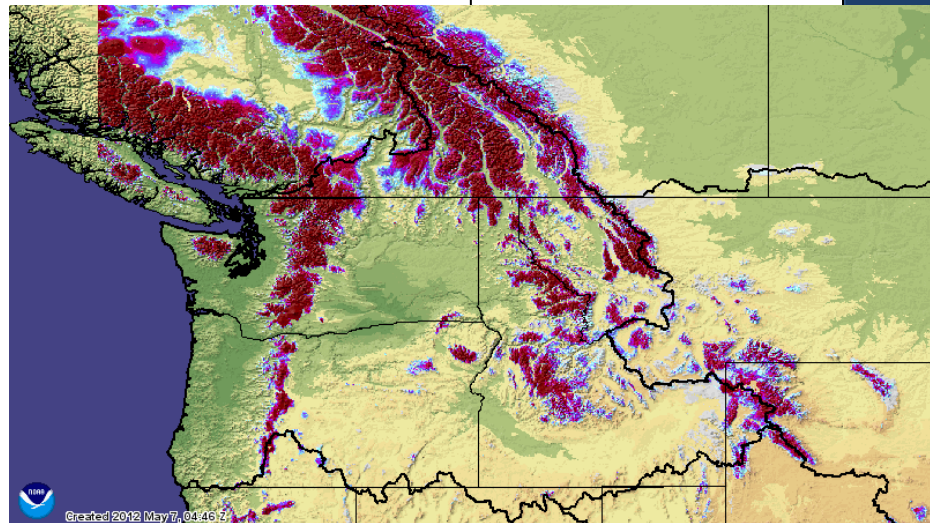


Not Estimated

Elevation in feet



May 6, 2012





Future Conditions



Climate Outlooks

10 Day Precipitation Forecast

Water Supply Forecasts

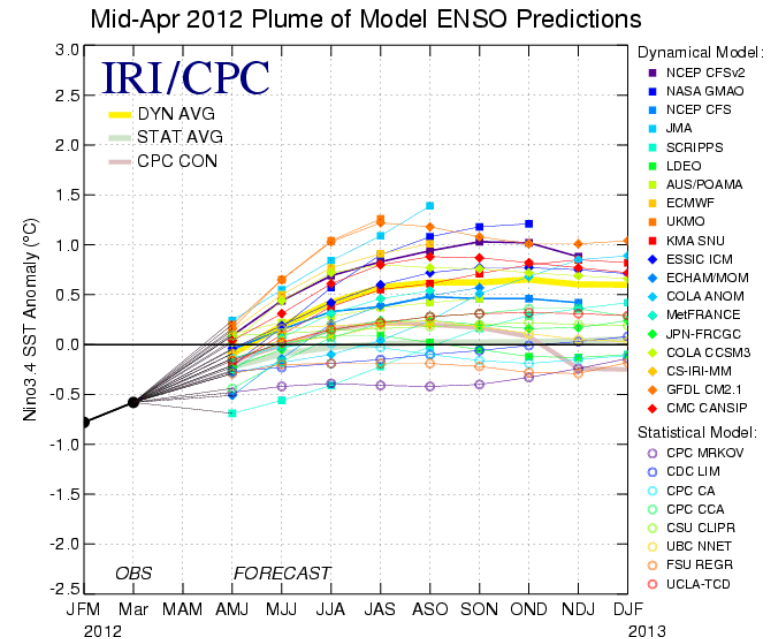
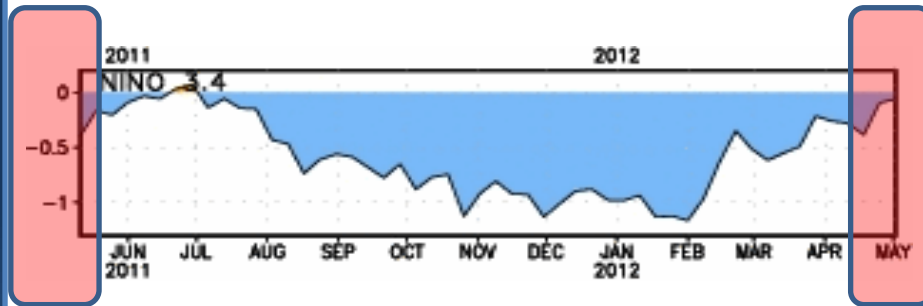


Enso: Observed and Forecast

SST Anomaly (Deg C)



Latest observed: SST 3.4 ~ -0.1 Deg C



CPC Synopsis: ENSO-Neutral Conditions have returned and will be present through summer 2012.

Source: Climate Prediction Center Weekly ENSO Update

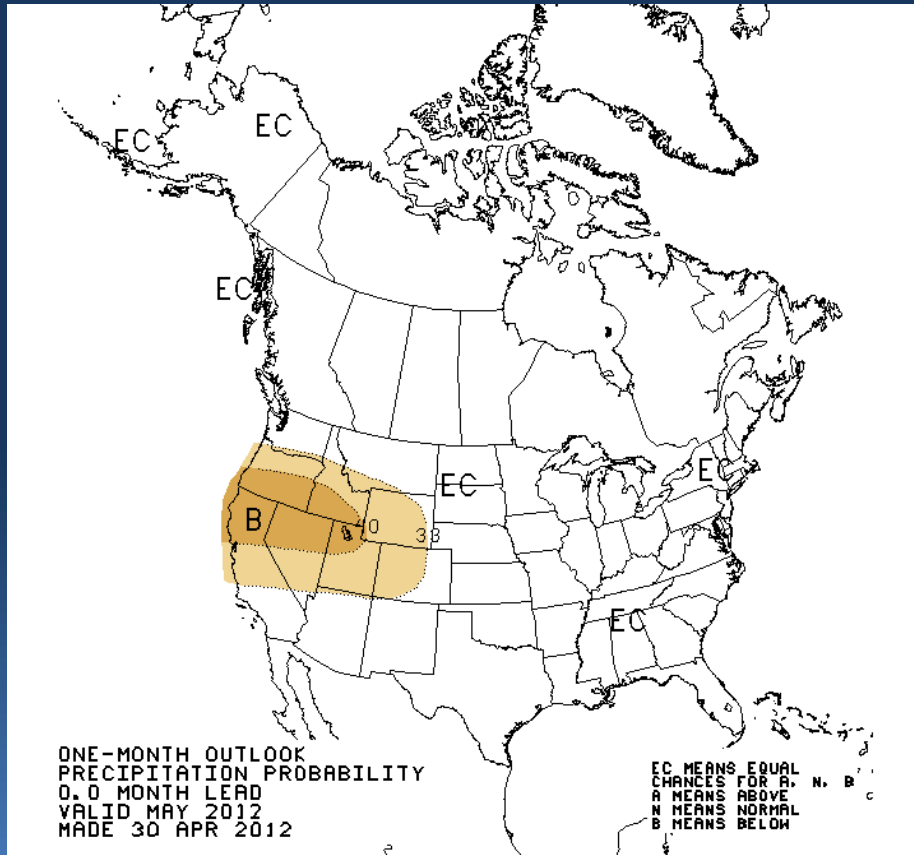
http://www.cpc.ncep.noaa.gov/products/analysis_monitoring/lanina/enso_evolution-status-fcsts-web.pdf



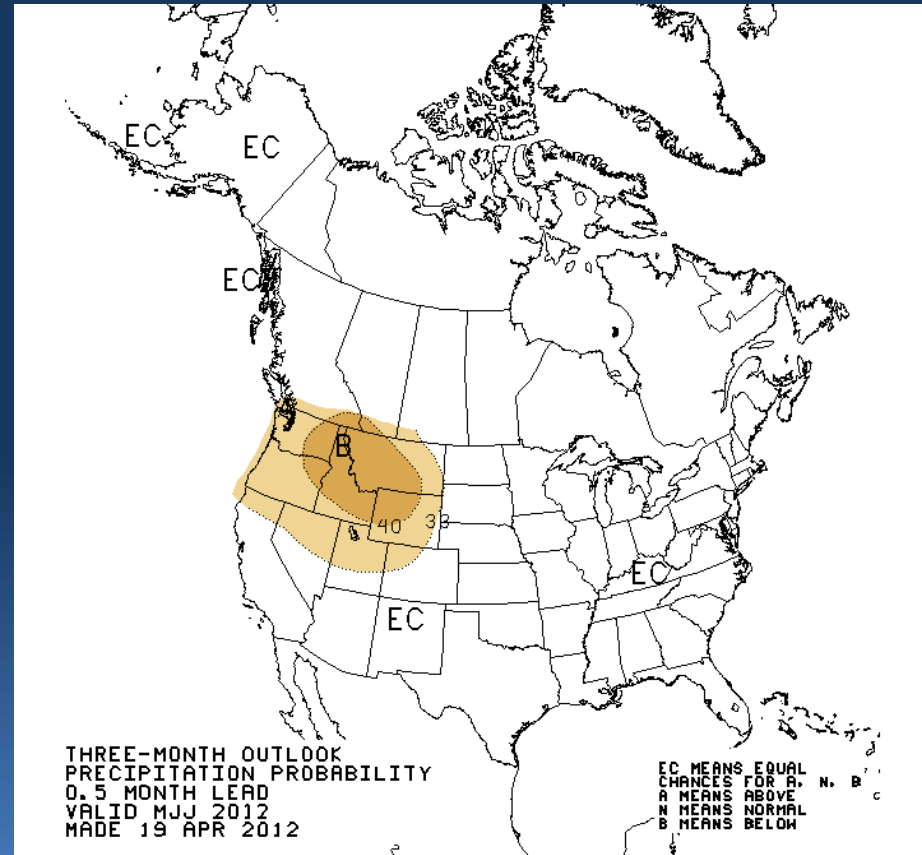
Climate Outlook: Precipitation



Current Month Outlook



Three Month Outlook

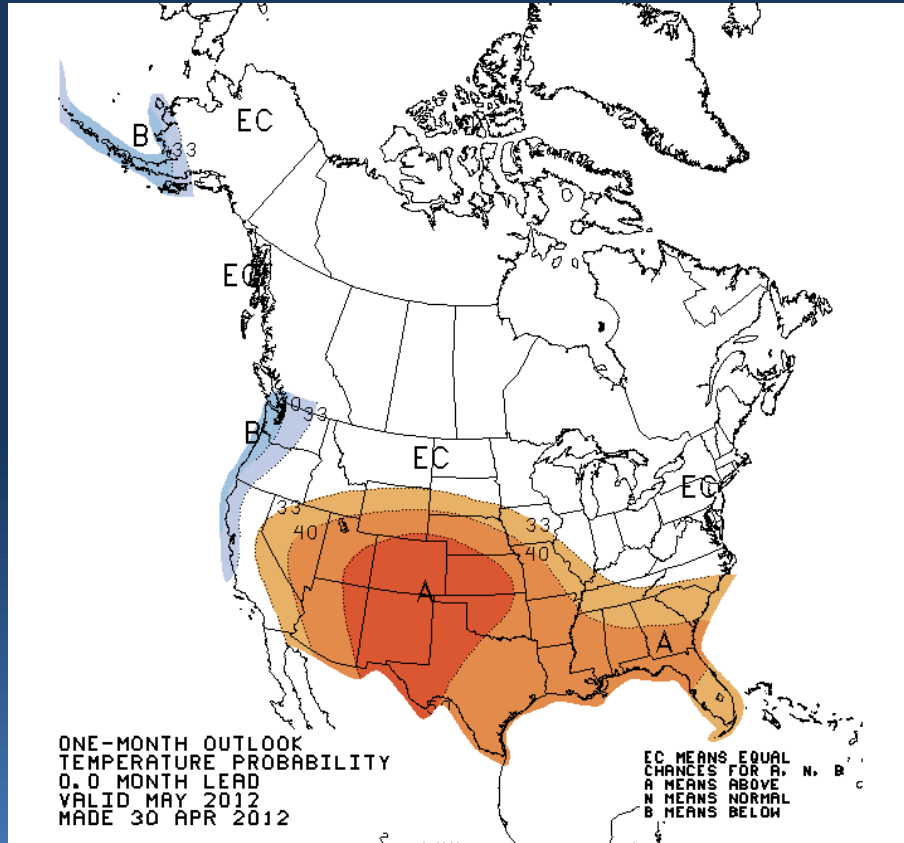




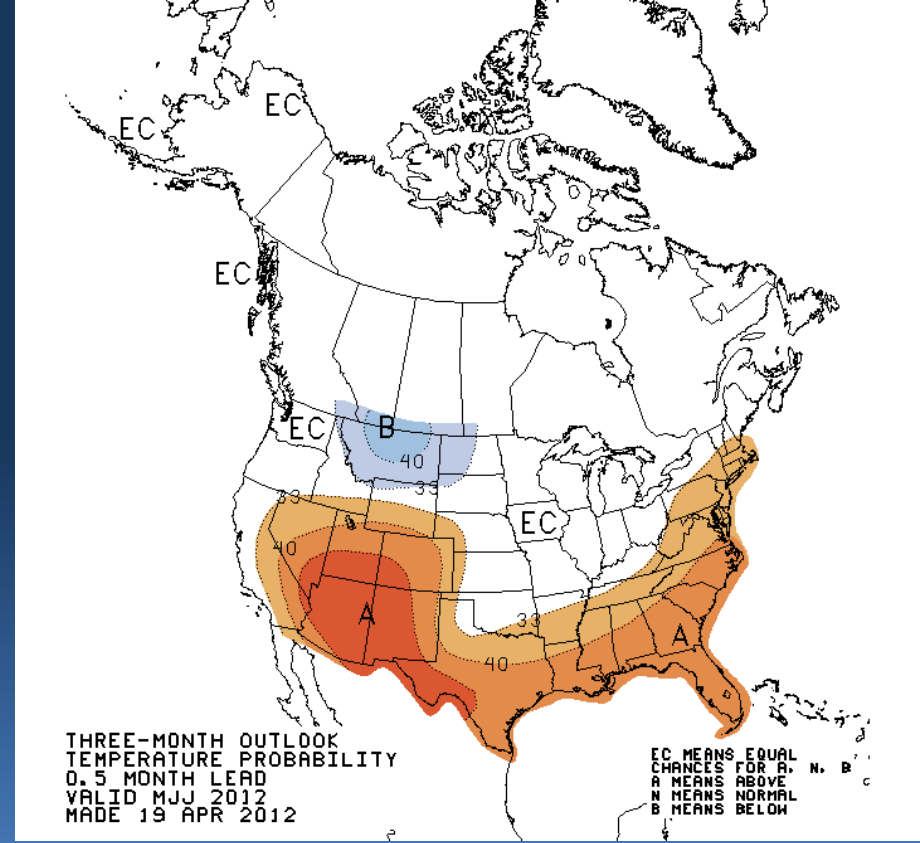
Climate Outlook: Temperature



Current Month Outlook



Three Month Outlook

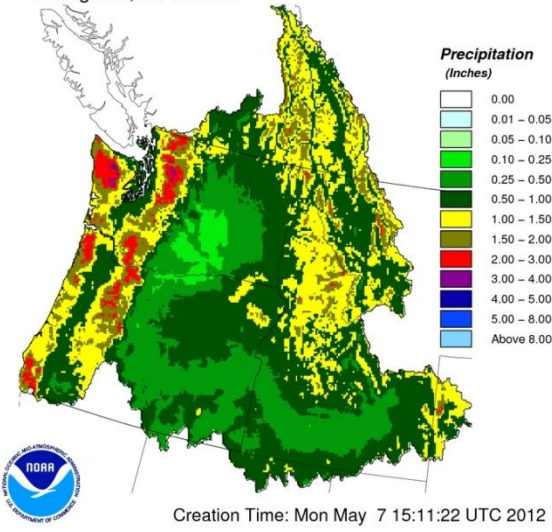




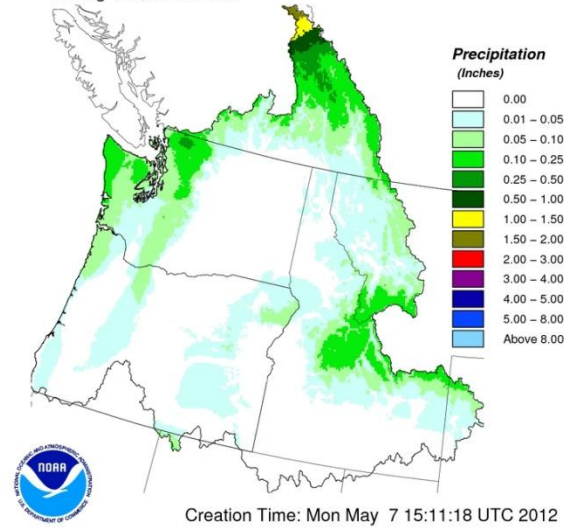
ESP 10 Day Precipitation Forecast



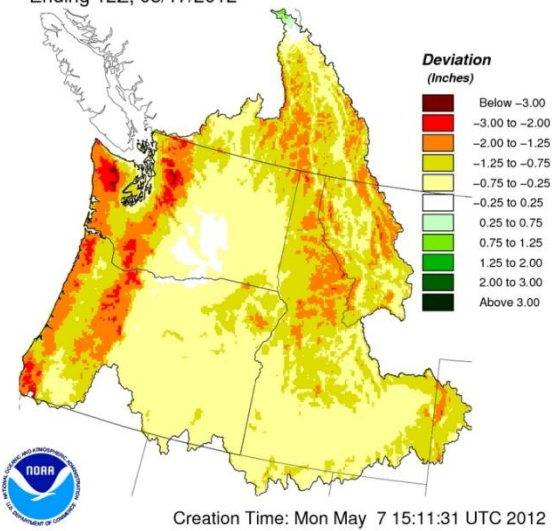
10 Day Precipitation Climatology
Ending 12Z, 05/17/2012



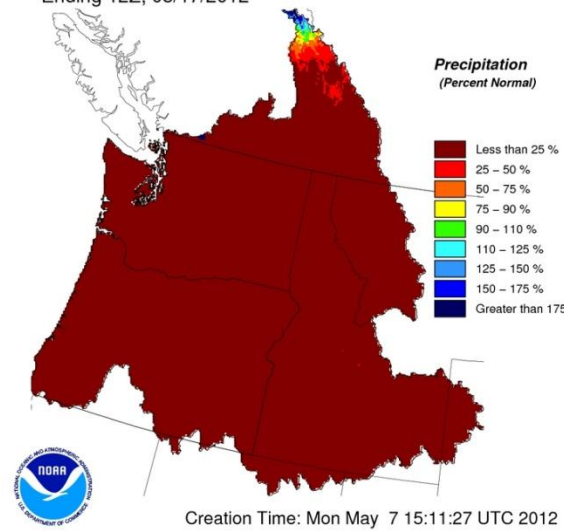
10 Day QPF
Ending 12Z, 05/17/2012



10 Day QPF (Deviation from Climatology)
Ending 12Z, 05/17/2012

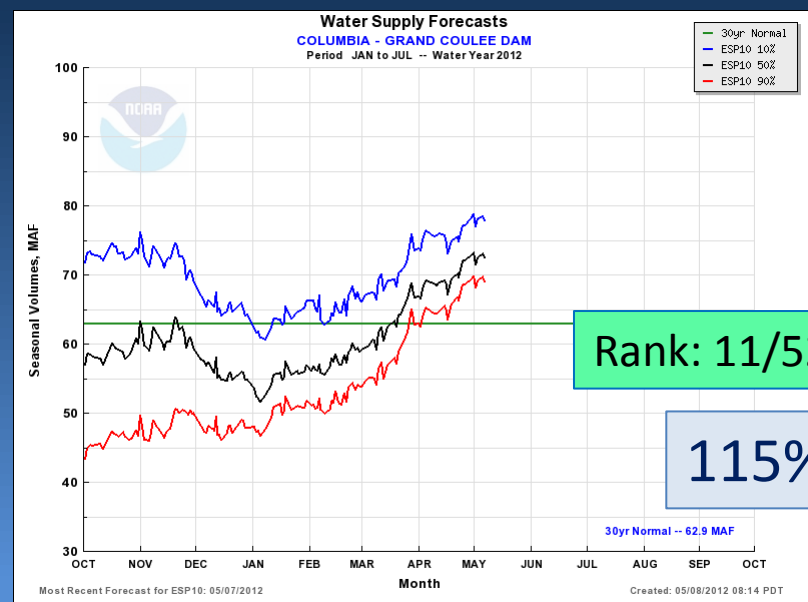
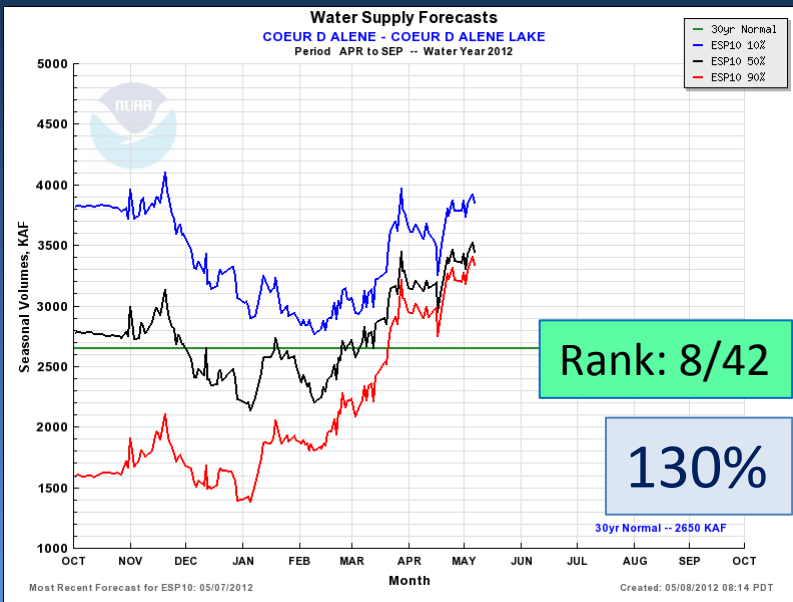
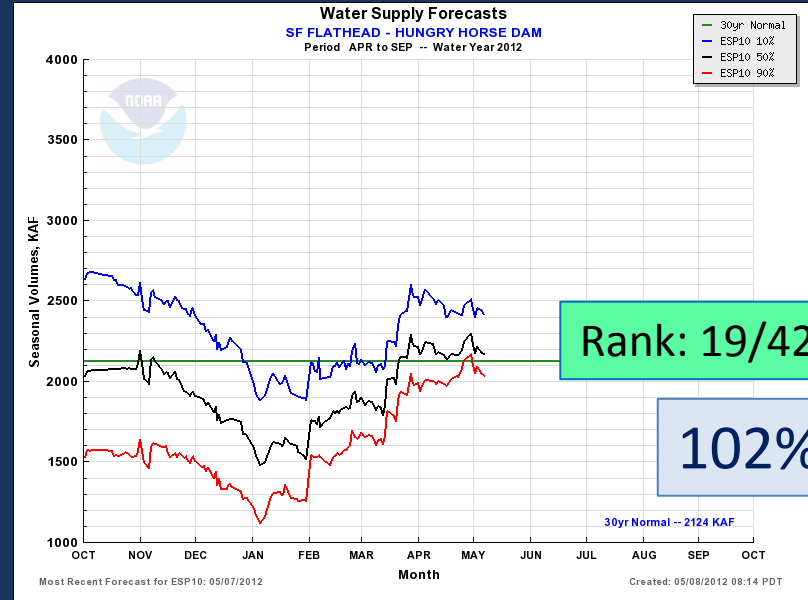
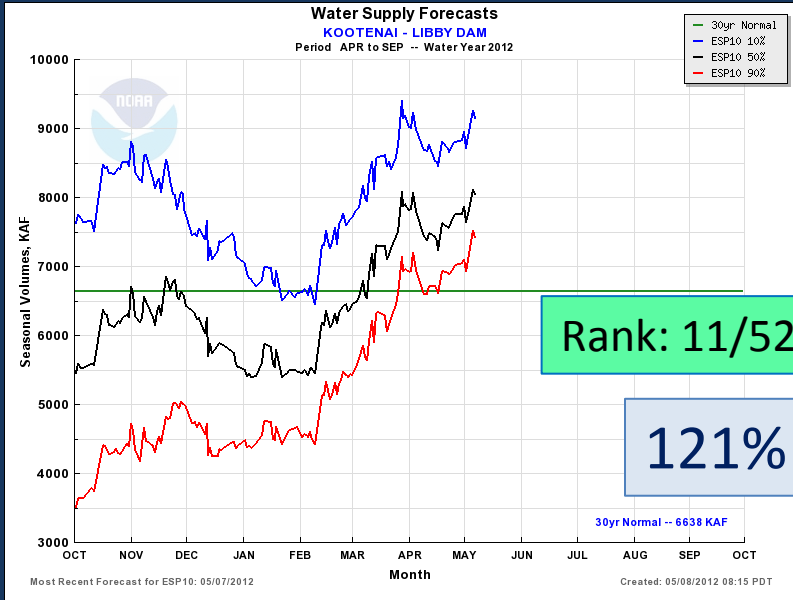


10 Day QPF (Percent of Climatology)
Ending 12Z, 05/17/2012



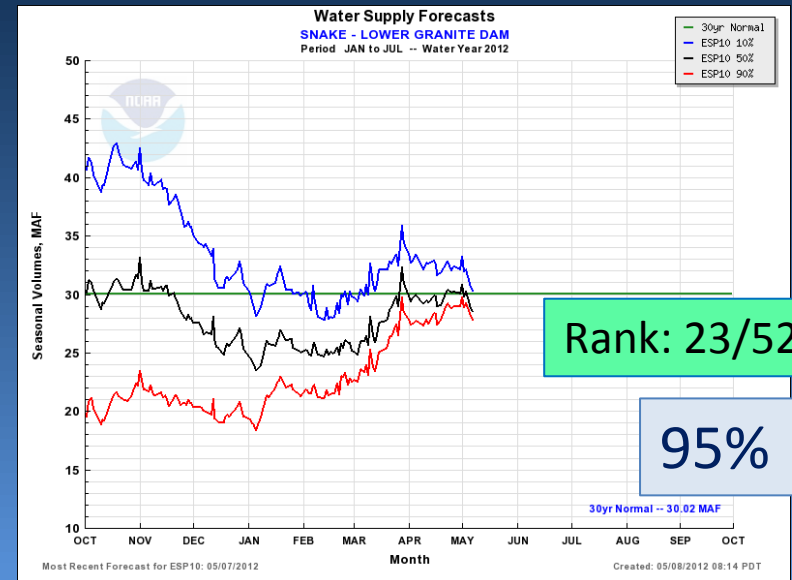
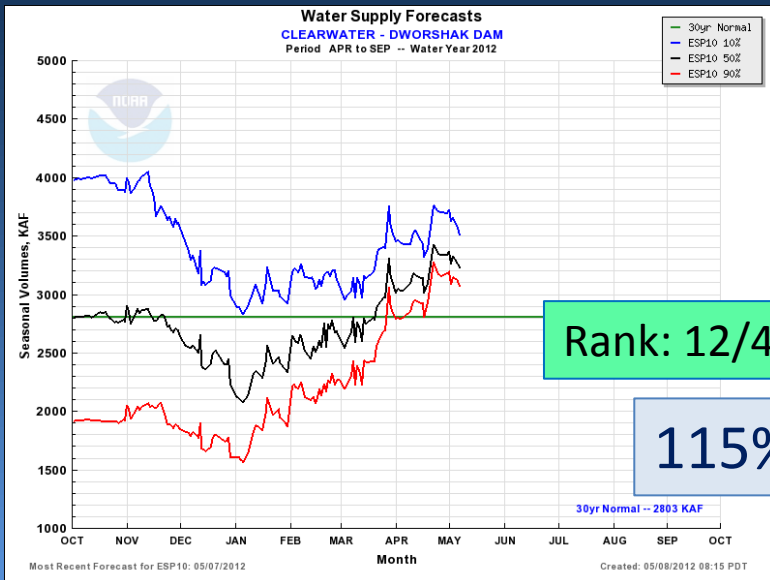
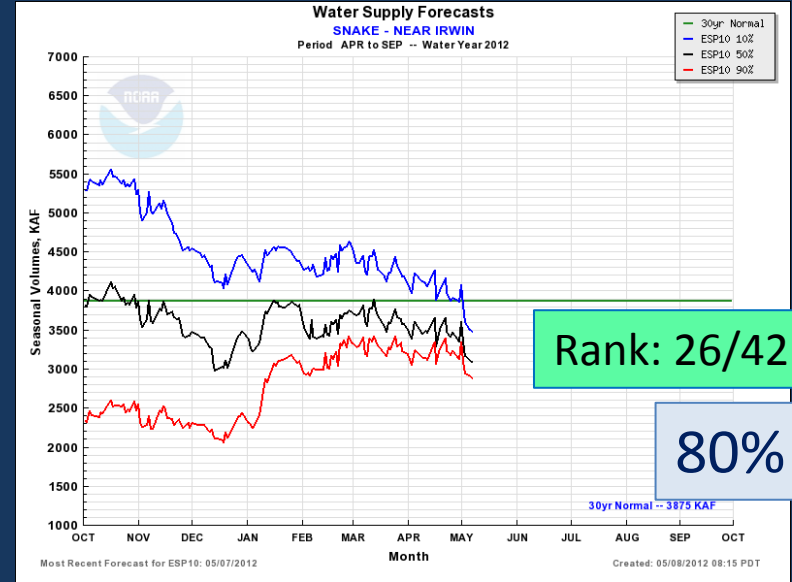
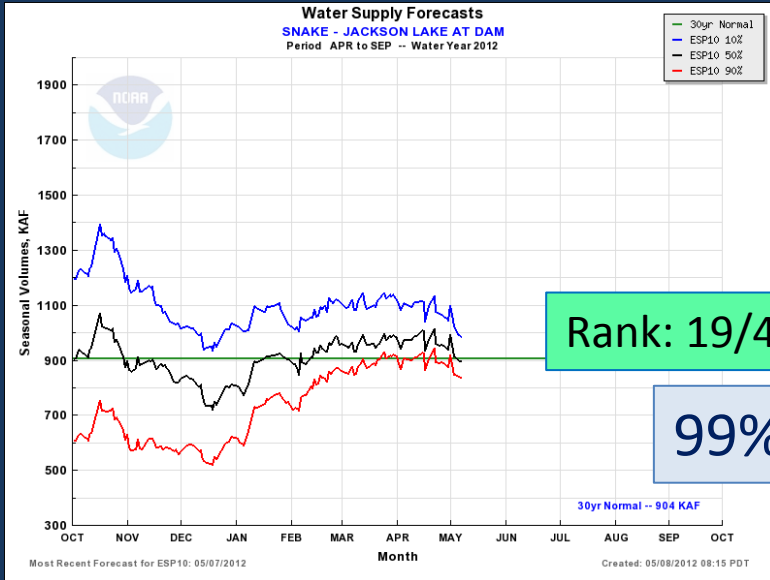


Water Supply Forecast: Upper Columbia



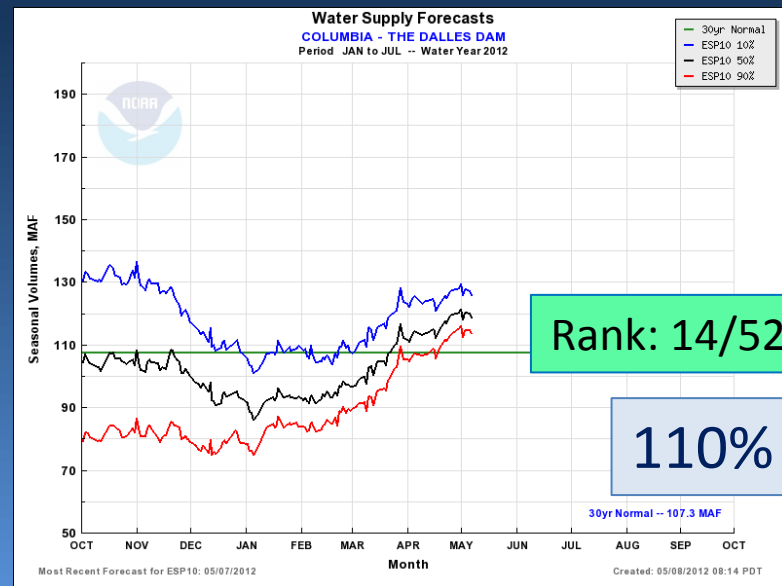
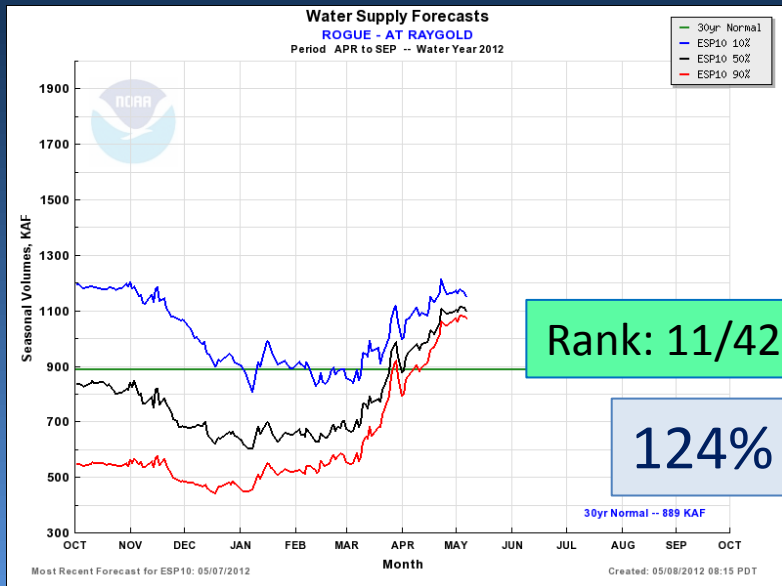
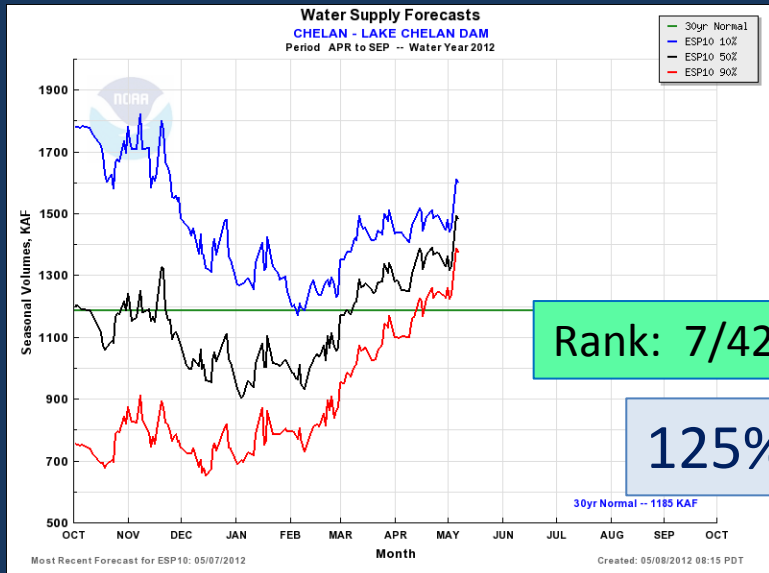


Water Supply Forecast: Snake





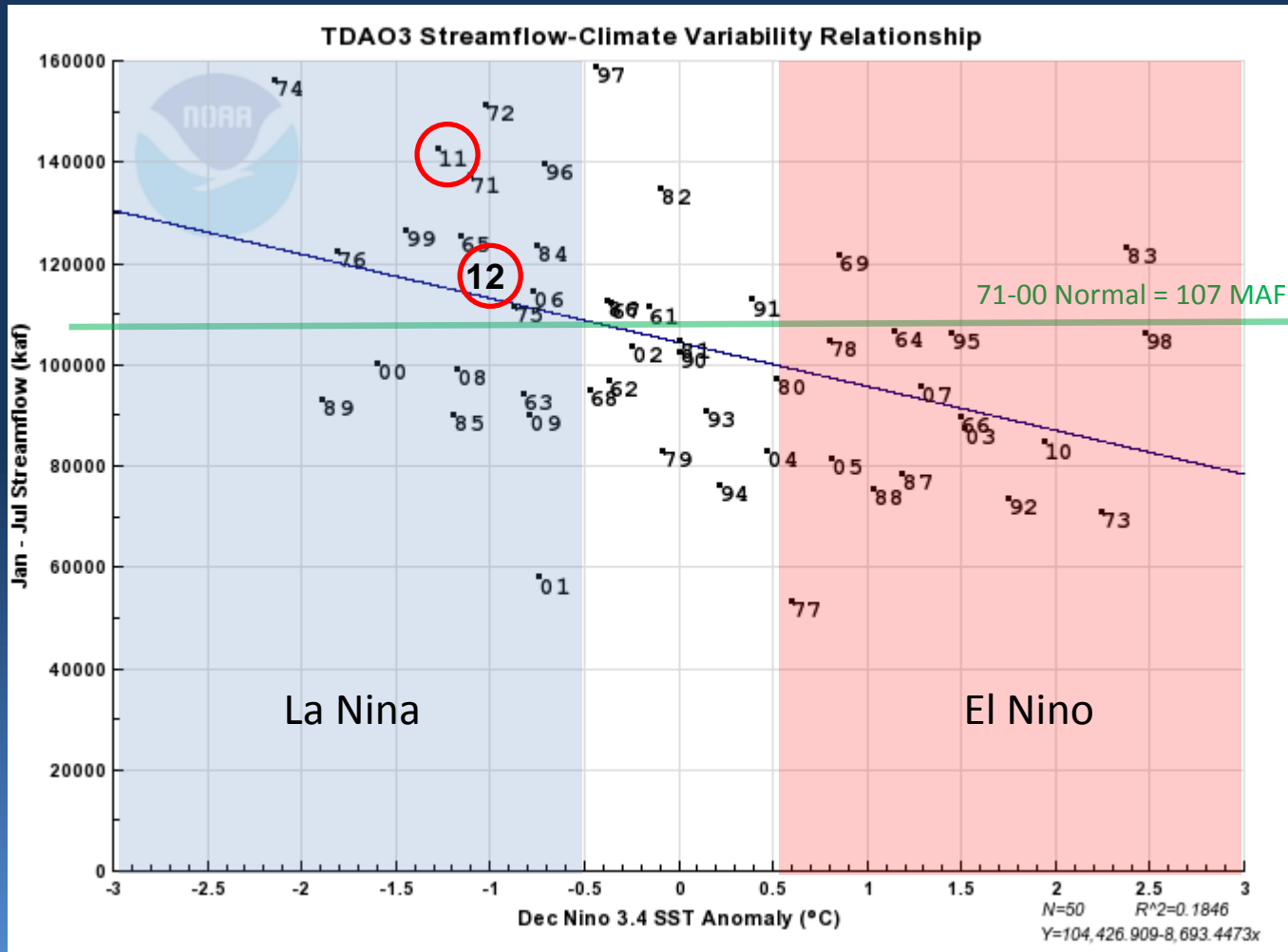
Water Supply Forecast: Lower Columbia





SST Anomaly vs Streamflow

Columbia River near The Dalles





NWRFC Water Supply Webpage

http://www.nwrfc.noaa.gov/water_supply/ws_schd.cgi



Schedule for <i>Live Water Discussion</i>					
Jan	Feb	Mar	Apr	May	Jun
10	8	8	9	8	8 XXX

The May 8th Briefing will be the last for the season.