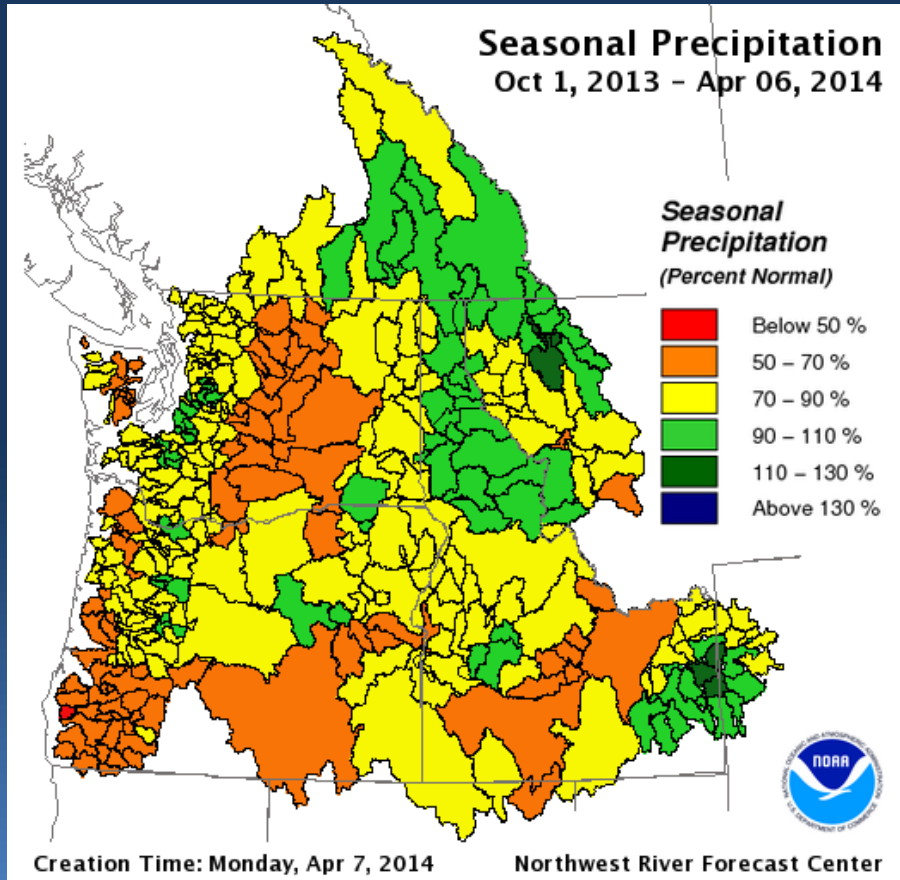




Observed Seasonal Precipitation



** > 200% Normal Precipitation for Month of March in Flathead, Pend Oreille, Kootenai, and Spokane Basins



Observed Precipitation Water Year to Date Columbia River Above the Dalles

DIVISION NAME	OBS (in)	% Norm Apr/Mar
Snake River abv Ice Harbor Dam	12.0	84/73
Columbia River abv Grand Coulee	21.1	92/78
Columbia River abv The Dalles	15.0	84/73

http://www.nwrfc.noaa.gov/water_supply/wy_summary/wy_summary.php?tab=1

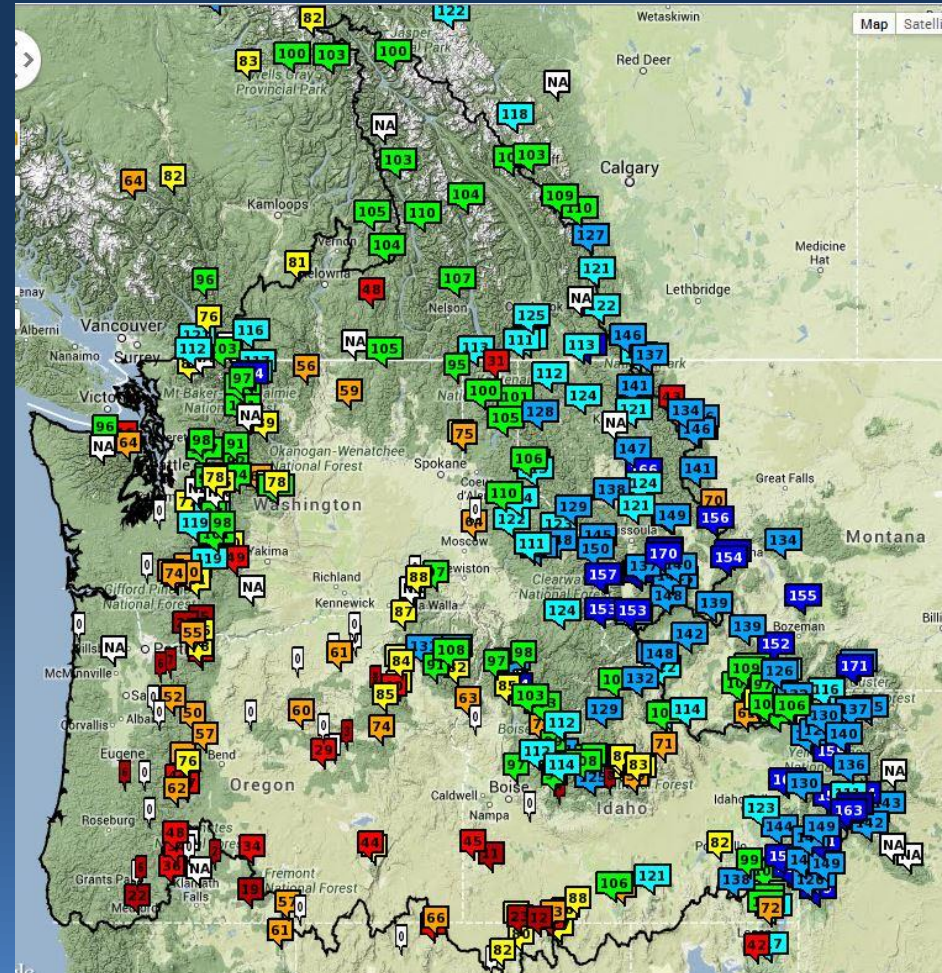
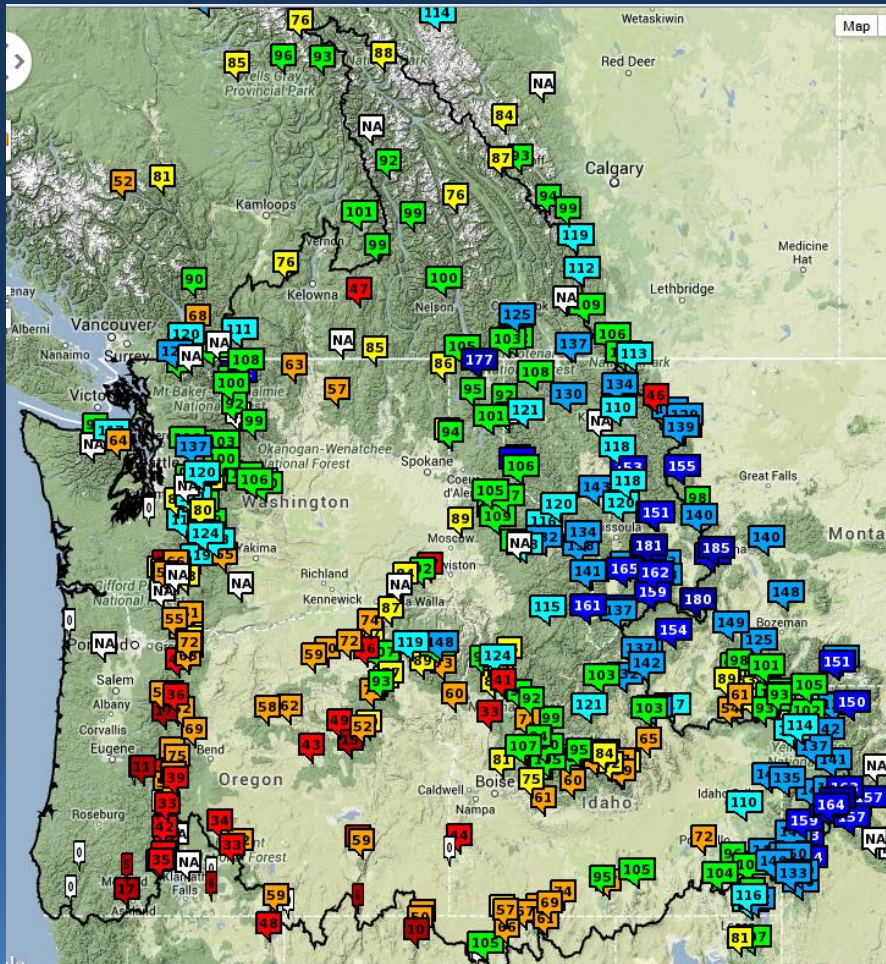


Snow Conditions



Last Month: Mar 5, 2014

Current: Apr 9, 2014



<http://www.nwrfc.noaa.gov/snow/>



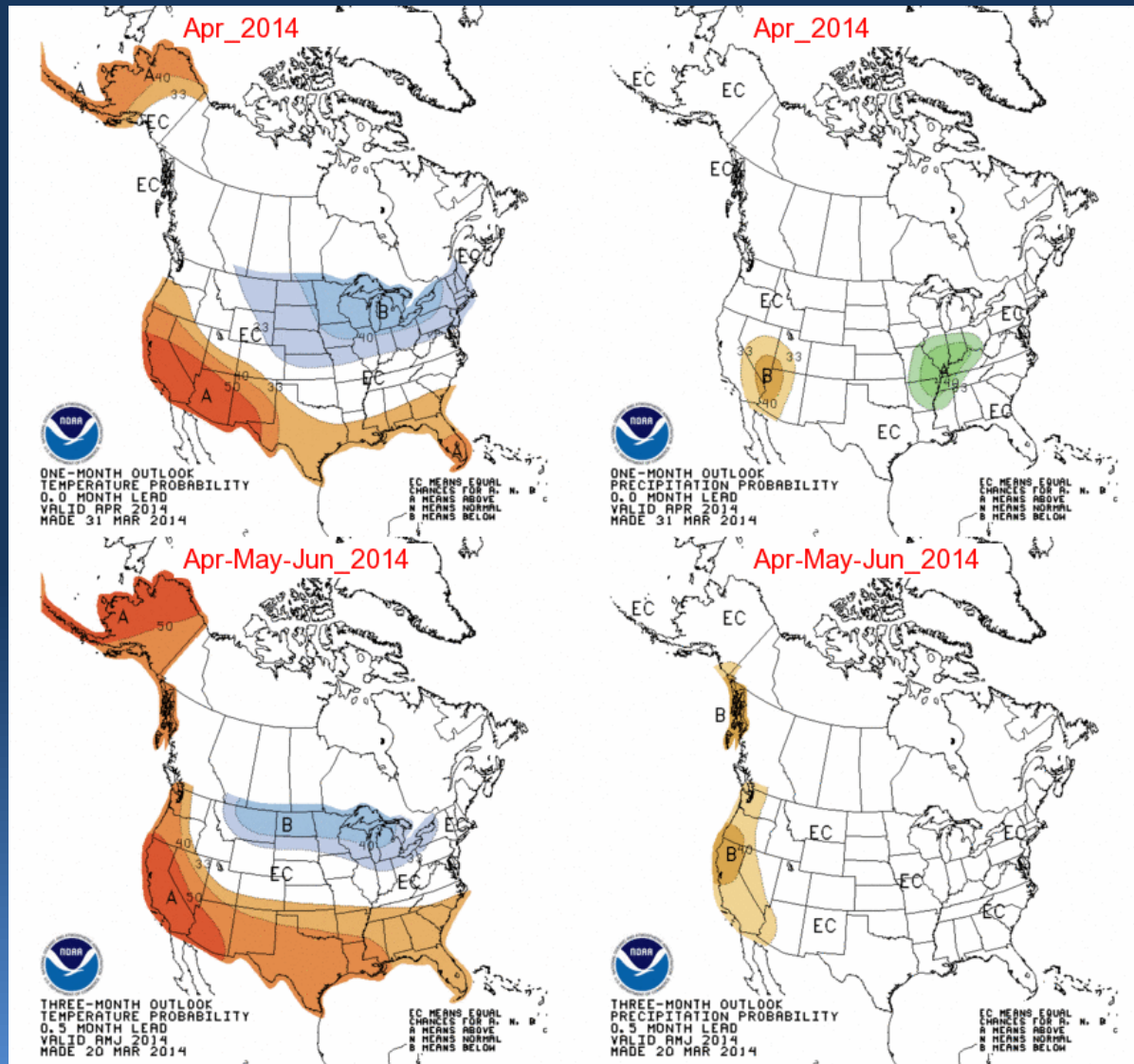
CPC Climate Outlook



Temperature

Precipitation

Current Month Outlook



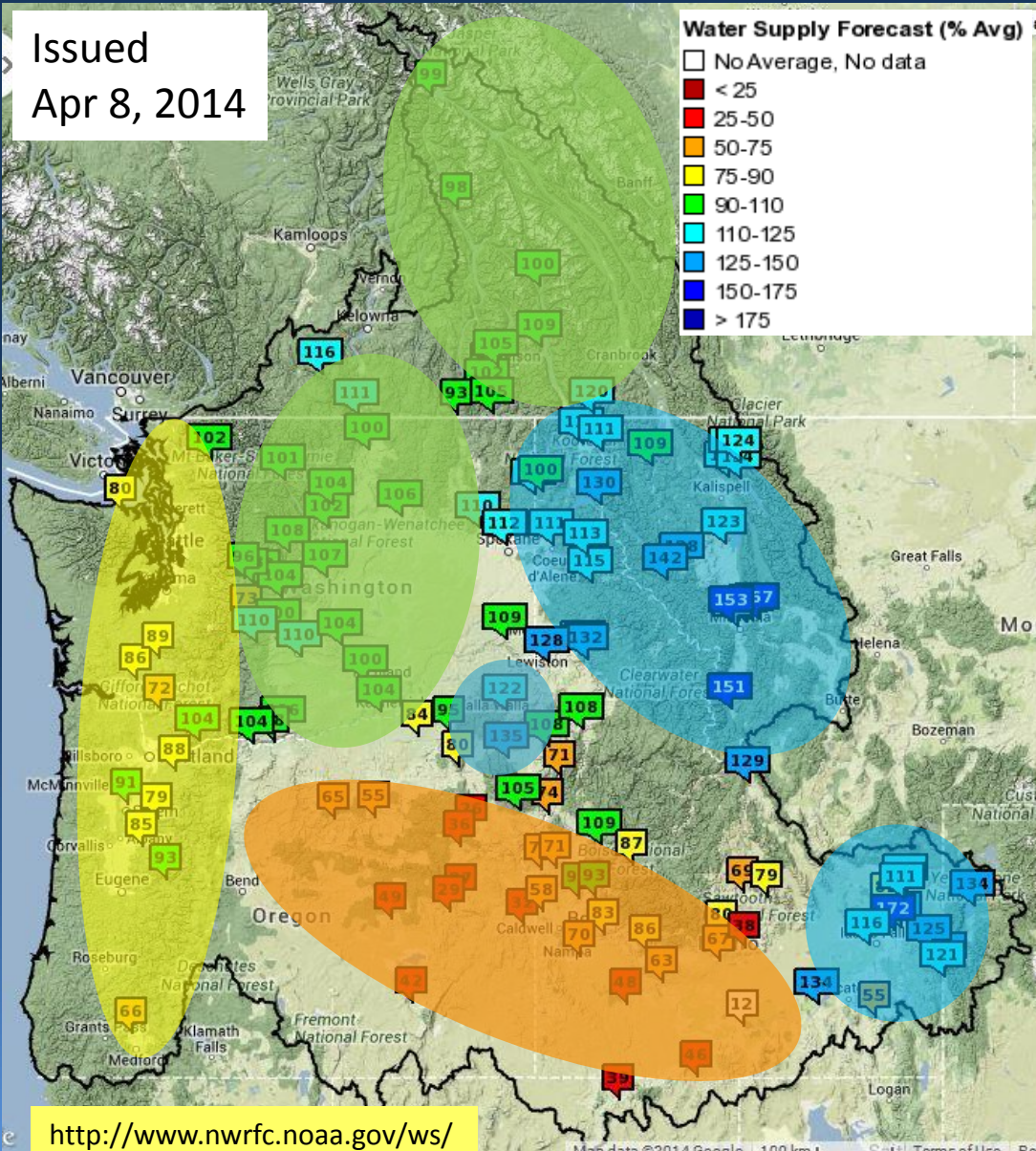
Three Month Outlook



Water Supply Summary



Issued
Apr 8, 2014



<http://www.nwrfc.noaa.gov/ws/>

Most forecasts have increased due to above normal March precipitation.

Apr-Sep forecasts for most basins are normal to above normal.

Forecasts for basins in southeast Oregon, and southwest Idaho are below normal.

Forecasts west of the Cascades are near to below normal.

Wettest forecasts (above 110%) are in basins draining the Bitterroot Range of Montana, the Rockies, and the Blue Mountains of NE Oregon.

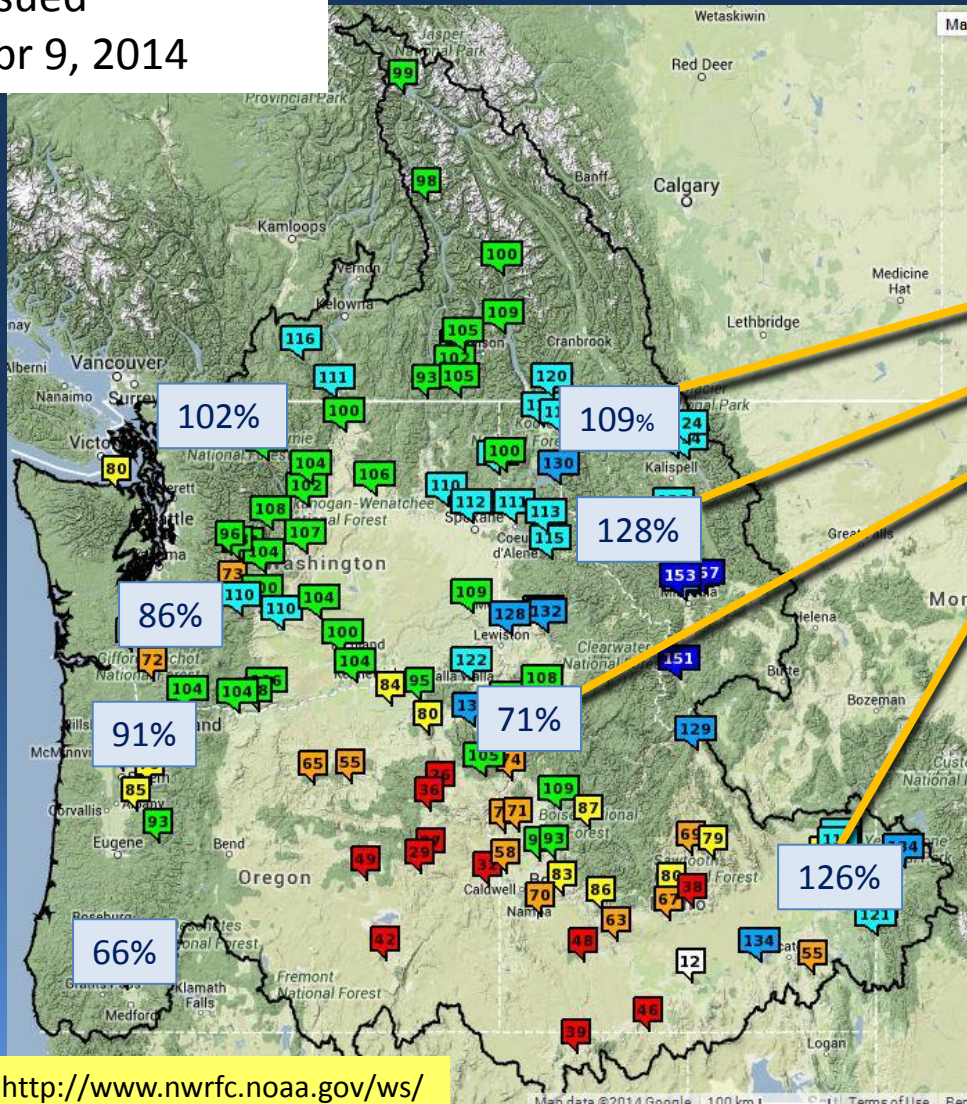


Water Supply Forecasts



Apr-Sep

Issued
Apr 9, 2014



Mar/Apr % Change

East-Side (Apr-Sep)

- Kootenai at Libby Dam **+12** Rank: 24/54
- Clark Fork nr Plains **+11** Rank: 12/44
- Snake at Hells Canyon **-2** Rank: 29/44
- Snake nr Heise **-2** Rank: 29/44

West-Side (Apr-Sep)

- Skagit nr Concrete **-2** Rank: 22/44 (102%)
- Cowlitz at Castle Rock **+2** Rank: 32/44 (86%)
- Willamette at Salem **+1** Rank: 32/44 (91%)
- Rogue at Raygold **-8** Rank: 39/44 (74%)



Northwest River Forecast Center Water Supply Forecasts

Close Archive Data/Normals Rankings Adjustments Verification Verify All Years Help

COLUMBIA - THE DALLES DAM (TDAO3) Forecasts for Water Year 2014

Official Forecast

10 days QPF: Ensemble: 2014-04-08 Issued: 2014-04-09

Forecasts Are in KAF

Forecast Period	Forecasts Are in KAF				30 Year Average (1981-2010)
	90 %	50 %	% Average	10 %	
APR-SEP	91154	96526	104	107530	92704
APR-JUL	76950	82774	104	93491	79855
APR-AUG	85831	90862	104	101847	87532
JAN-JUL	98322	104146	103	114863	101368

5 days QPF: Ensemble: 2014-04-08 Issued: 2014-04-09

APR-SEP	91511	97952	106	108553	92704
APR-JUL	77168	83622	105	95260	79855
APR-AUG	86449	91953	105	102913	87532
JAN-JUL	98540	104994	104	116632	101368

0 days QPF: Ensemble: 2014-04-08 Issued: 2014-04-09

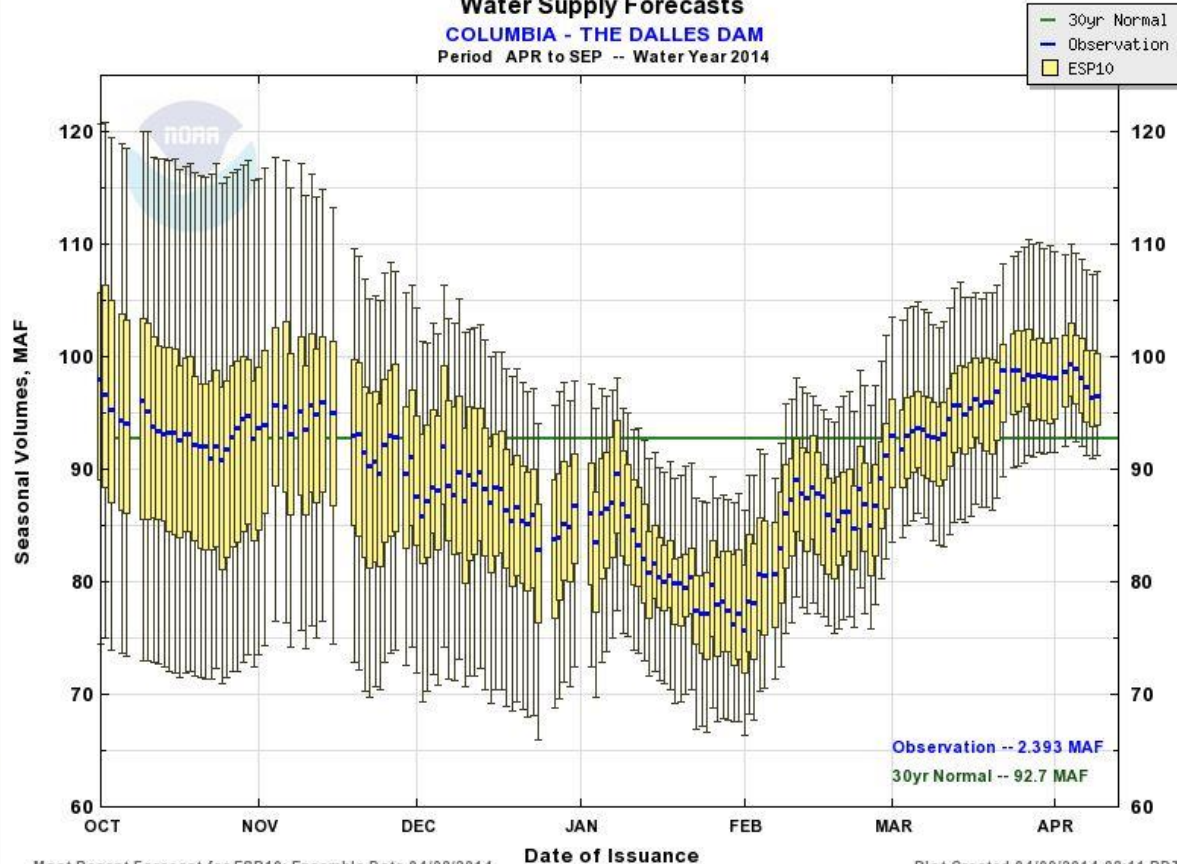
APR-SEP	92572	99426	107	110889	92704
APR-JUL	78750	84752	106	96496	79855
APR-AUG	86882	93687	107	105327	87532
JAN-JUL	100122	106124	105	117868	101368

Move the mouse over the desired "Forecast Period" to display a graph.

Water Supply Forecasts

COLUMBIA - THE DALLES DAM

Period APR to SEP -- Water Year 2014



Max Scale Scale To Data Scale To Last 45 Days

Overlay

ESP10 ESP5 ESPO

Data Files

CSV (ESP10 / APR-SEP)



NWRFC Water Supply Webpage

http://www.nwrfc.noaa.gov/water_supply/ws_schd.cgi



2014 Schedule for <i>Live Water Supply Briefings</i>					
Jan	Feb	Mar	Apr	May	Jun
9	6	6	10	8	TBD
<i>All presentations held at 10am PDT/PST, unless noted otherwise</i>					
Click here for Registration Information					
Archive of Previous Briefings					

<http://www.nwrfc.noaa.gov/presentations/presentations.cgi>

Joanne Salerno, NWRFC
W-ptr.Webmaster@noaa.gov
(503)326-7291